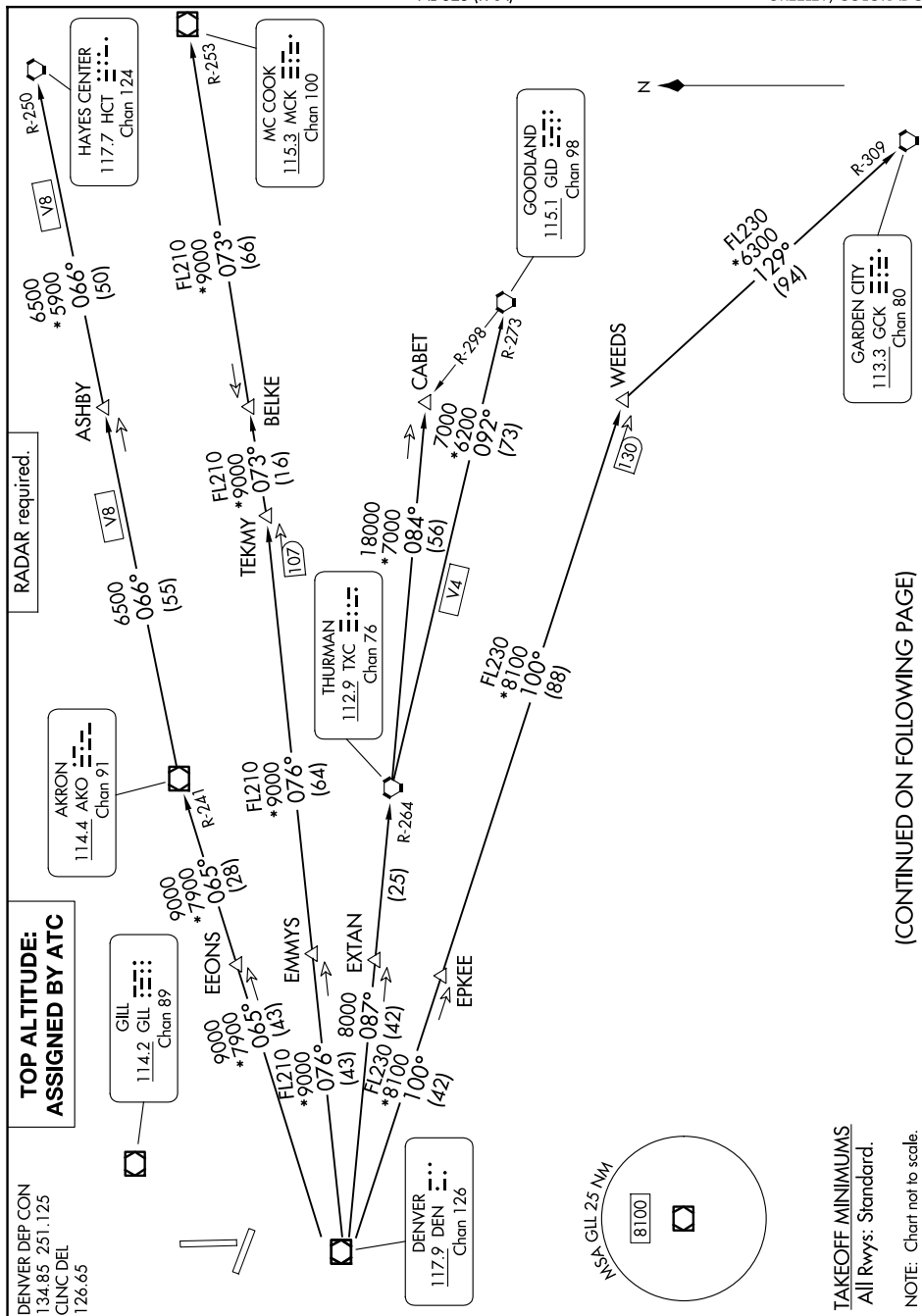
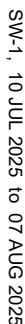


PLAINS TWO DEPARTURE

AL-325 (FAA)

Greeley-Weld County (GXY)

GREELEY, COLORADO



(CONTINUED ON FOLLOWING PAGE)

SW-1, 10 JUL 2025 to 07 AUG 2025

PLAINS TWO DEPARTURE

(PLAIN2.DEN) 12JUN25

GREELEY, COLORADO

Greeley-Weld County (GXY)