

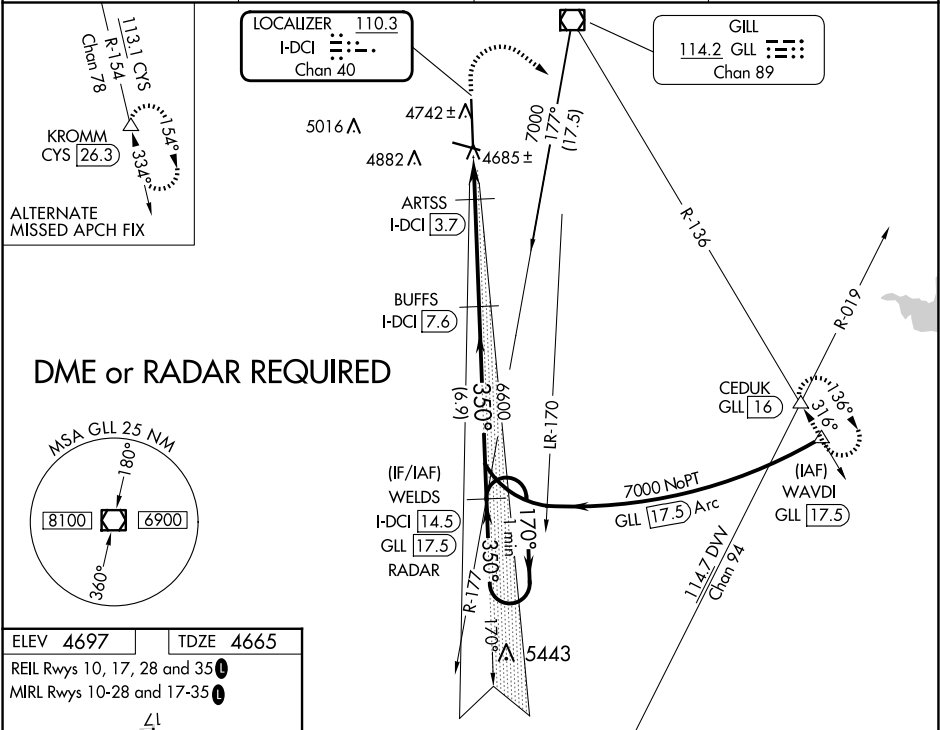
LOC/DME I-DCI 110.3 Chan 40	APP CRS 350°	Rwy Idg TDZE Apt Elev	8900 4665 4697
---	------------------------	-----------------------------	---

ILS or LOC RWY 35
GREELEY-WELD COUNTY (GXY)

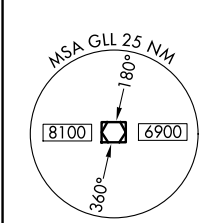
⚠ VDP NA when using Northern Colorado Rgnl altimeter setting. When local altimeter not received, use Northern Colorado Rgnl altimeter setting and increase DA to 4950 feet and all visibilities ¼ SM; increase all MDAs 100 feet and visibility Cats C and D ½ SM.

MISSED APPROACH: Climb to 5300 then climbing right turn to 7000 on heading 120° and GLL VOR/DME R-136 to CEDUK INT/GLL 16 DME and hold.

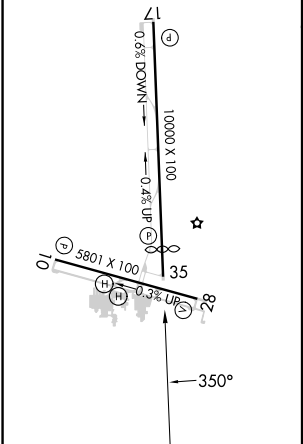
AWOS-3PT 135.175	DENVER APP CON 134.85 251.125	CLNC DEL 126.65	UNICOM 122.7 (CTAF) ①
----------------------------	---	---------------------------	---------------------------------



DME or RADAR REQUIRED



ELEV 4697	TDZE 4665
REIL Rwy 10, 17, 28 and 35 ①	
MIRL Rwy 10-28 and 17-35 ①	



5300	7000	GLL R-136	CEDUK	Use I-DCI DME when on the localizer course.
↑	hdg 120°		△	
*LOC only		ARTSS I-DCI 3.7	BUFFS I-DCI 7.6	WELDS I-DCI 14.5
		*I-DCI 2.9		One Minute Holding Pattern
		I-DCI 1.6		
		5360*		
		1.2	0.8	3.9 NM
				6.9 NM
CATEGORY	A	B	C	D
S-ILS 35	4865-¾	200 (200-¾)		
S-LOC 35	5100-1	435 (500-1)	5100-1¼	435 (500-1¼)
ⓐ CIRCLING	5120-1 423 (500-1)	5200-1 503 (600-1)	5200-1½ 503 (600-1½)	5380-2¼ 683 (700-2¼)

SW-1, 10 JUL 2025 to 07 AUG 2025

SW-1, 10 JUL 2025 to 07 AUG 2025