

PIERRE, SOUTH DAKOTA

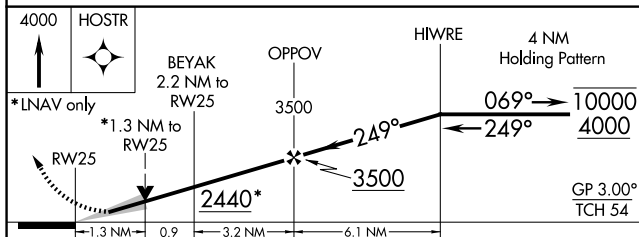
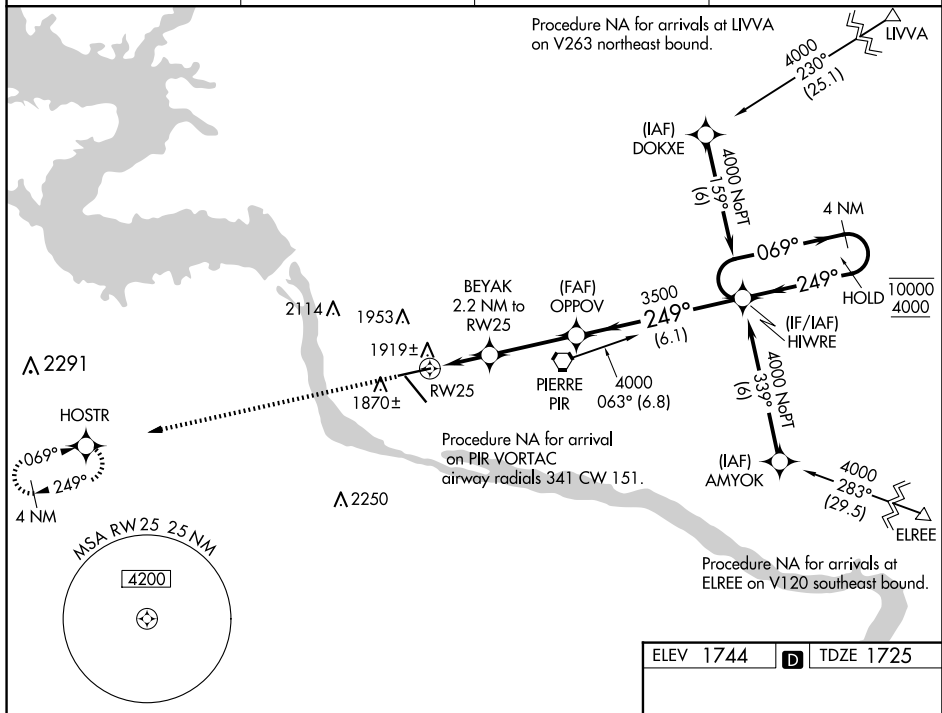
AL-324 (FAA)


24249

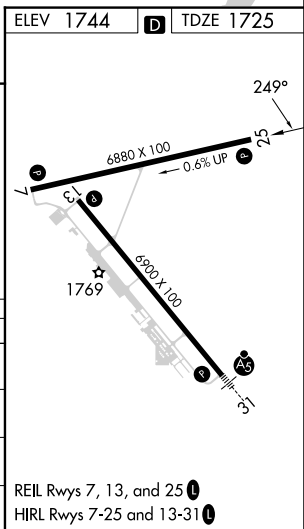
WAAS CH 63104 W25A	APP CRS 249°	Rwy Idg 6880 TDZE 1725 Apt Elev 1744
--	------------------------	---

RNAV (GPS) RWY 25
PIERRE RGNL (PIR)

RNP APCH:		MISSED APPROACH: Climb to 4000 direct HOSTR and hold.	
<div><div><div></div><div></div></div></div> <div>For uncompensated Baro-VNAV systems, LNAV/VNAV NA below -26°C or above 54°C.</div>			
ASOS 119.025	MINNEAPOLIS CENTER 125.1 269.1	CTAF 122.70	UNICOM 122.95



CATEGORY		A	B	C	D
LPV	DA	1975-1 250 (300-1)			
LNNAV/ VNAV	DA	2179-1 $\frac{3}{4}$ 454 (500-1 $\frac{3}{4}$)			
LNNAV	MDA	2180-1 455 (500-1)	2180-1 $\frac{1}{4}$ 455 (500-1 $\frac{1}{4}$)	2180-1 $\frac{1}{2}$ 455 (500-1 $\frac{1}{2}$)	
 CIRCLING		2240-1 496 (500-1)	2300-1 556 (600-1)	2400-1 $\frac{3}{4}$ 656 (700-1 $\frac{3}{4}$)	2460-2 $\frac{1}{4}$ 716 (800-2 $\frac{1}{4}$)



PIERRE, SOUTH DAKOTA

Amdt 2A 25FEB21

44°23'N-100°17'W

PIERRE RGNL (PIR)

RNAV (GPS) RWY 25

NC-1, 10 JUL 2025 to 07 AUG 2025