

LOC/DME I-PIR	APP CRS	Rwy Idg	6900
111.9	313°	TDZE	1720
Chan 56		Apt Elev	1744

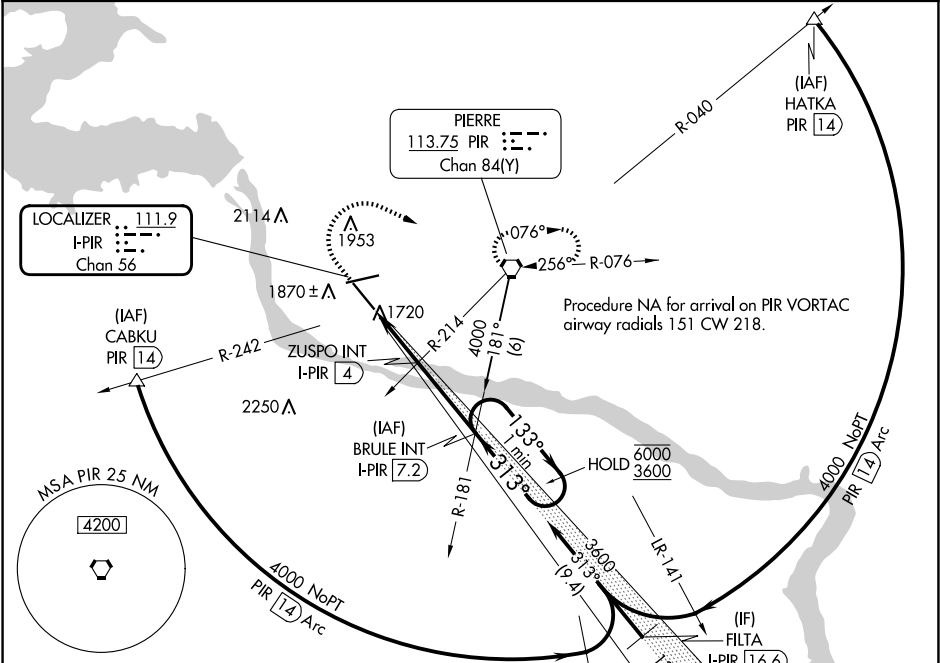
ILS or LOC RWY 31
PIERRE RGNL (PIR)

⚠ For inop ALS, increase S-LOC 31 Cat C/D visibility to ¾ SM.

MALSR

MISSED APPROACH: Climb to 2400 then climbing right turn to 4000 direct PIR VORTAC and hold, continue climb-in-hold to 4000.

ASOS 119.025	MINNEAPOLIS CENTER 125.1 269.1	CTAF 122.70	UNICOM 122.95
-----------------	-----------------------------------	----------------	------------------



ELEV 1744 **D** TDZE 1720

REIL Rwy 7, 13, and 25 **L**

HIRL Rwy 7-25 and 13-31 **L**

FAF to MAP 5.7 NM

Knots	60	90	120	150	180
Min:Sec	5:42	3:48	2:51	2:17	1:54

⚠ 2520

2400 4000 PIR Use I-PIR DME when on the localizer course.

***LOC only**

***I-PIR 2.2** **I-PIR 1.5** **ZUSPO INT I-PIR 4** **BRULE INT I-PIR 7.2**

One Minute Holding Pattern

133° **313°** **3600** **6000** **3600**

GS 3.00° **TCH 56**

0.7 NM **1.8 NM** **3.2 NM**

CATEGORY	A	B	C	D
S-ILS 31	1920-½	200 (200-½)		
S-LOC 31	1980-½	260 (300-½)		
CIRCLING	2240-1 496 (500-1)	2300-1 556 (600-1)	2400-1¾ 656 (700-1¾)	2460-2¼ 716 (800-2¼)

NC-1, 10 JUL 2025 to 07 AUG 2025

NC-1, 10 JUL 2025 to 07 AUG 2025