

TACAN Z RWY 30

TACAN MUO Chan 87	APCH CRS 295°	Rwy Idg 13,510 TDZE 2996 Arpt Elev 2996
----------------------	------------------	--------------------------------------------------------

[USAF]

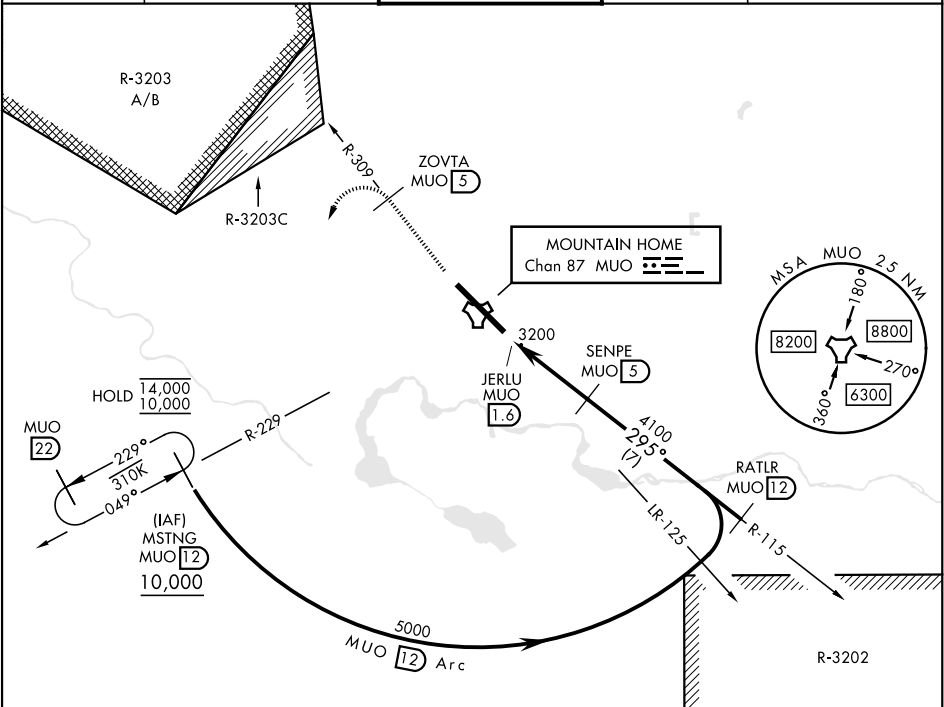
MOUNTAIN HOME AFB (KMUO)

▼ * When ALS inop, increase CAT AB RVR to 55, vis to 1 mile, CAT CDE vis to 1½ miles.
** Circling not authorized NE of Rwy 12-30.

ALSF-1
A1

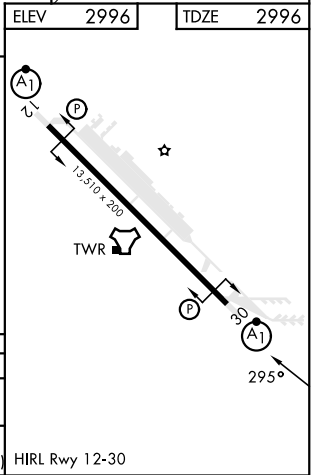
MISSED APPROACH: Climb to 10,000 on MUO TACAN R-309 to ZOVTA/5 DME, and then turn left on heading 169° to intercept MUO R-229 to MSTNG/12 DME and hold, continue climb-in-hold to 10,000.

ATIS 273.5	MOUNTAIN HOME APP CON 124.8 259.1	MOUNTAIN HOME TOWER 133.85 253.5	GND CON 120.5 275.8	CLNC DEL 127.1 290.425
---------------	--------------------------------------	-------------------------------------	------------------------	---------------------------



EMERG SAFE ALT 100 NM 14,100

10,000 MUO R-309	ZOVTA MUO 5	MSTNG MUO 12	RATLR MUO 12		
CATEGORY	A	B	C	D	E
S-30 *	3520/24 524 (600-½)		3520/55 524 (600-1)		
CIRCLING **	3520-1 524 (600-1)		3520-1½ 524 (600-1½)	3560-2 564 (600-2)	3700-2½ 704 (800-2½)



TACAN Z RWY 30

NW-1, 10 JUL 2025 to 07 AUG 2025

NW-1, 10 JUL 2025 to 07 AUG 2025