

TACAN Z RWY 12

TACAN MUO Chan 87	APCH CRS 129°	Rwy Ldg TDZE 2986 Arprt Elev 2996
-------------------	---------------	-----------------------------------

[USAF]

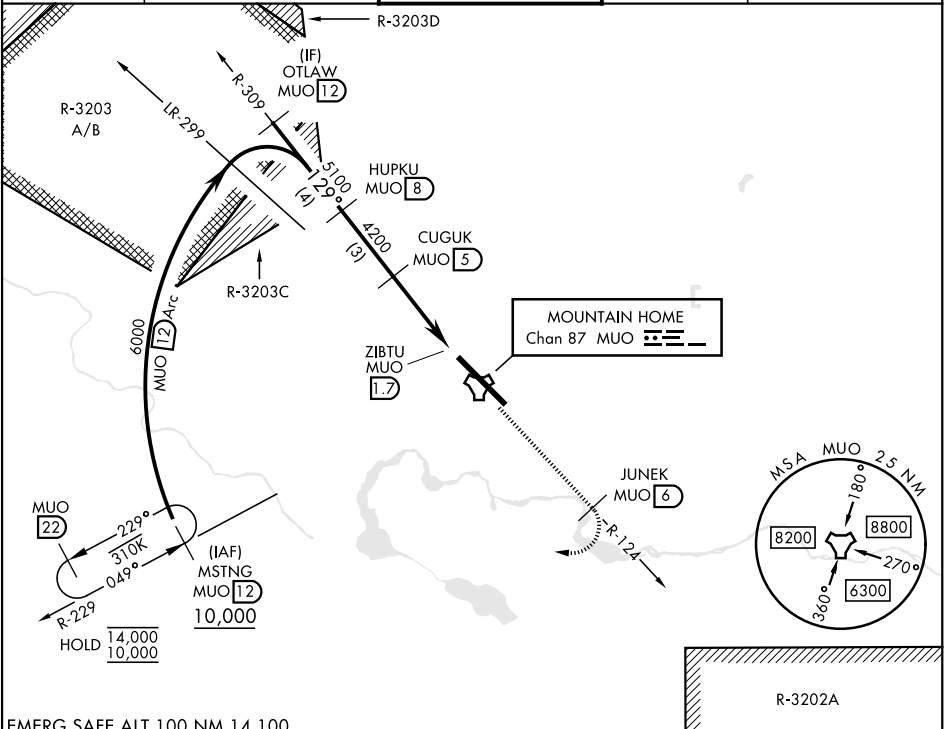
MOUNTAIN HOME AFB (KMUO)

▼ \* When ALS inop, increase CAT AB RVR to 55 and vis to 1 mile, CAT CDE vis to 1½ miles.  
\*\* Circling not authorized NE of Rwy 12-30.

ALSF-1

MISSED APPROACH: Climb to 10,000 on MUO TACAN R-124 to JUNEK/6 DME, then turn right on heading 289° to intercept MUO R-229 to MSTNG/12 DME and hold. Continue climb in hold to 10,000.

ATIS 273.5	MOUNTAIN HOME APP CON 124.8 259.1	MOUNTAIN HOME TOWER 133.85 253.5	GND CON 120.5 275.8	CLNC DEL 127.1 290.425
------------	-----------------------------------	----------------------------------	---------------------	------------------------



EMERG SAFE ALT 100 NM 14,100

VGSI and descent angles not coincident (VGSI Angle 2.50/TCH 41).

OTLAW MUO 12

HUPKU MUO 8

CUGUK MUO 5

MUO 3

ZIBTU MUO 1.7

MUO TACAN

129°

6000

5100

4200

2.91°

TCH 41

3.3 NM

0.5

ELEV 2996

TDZE 2986

129°

13.510 x 200

TWR

30

A1

CATEGORY	A	B	C	D	E
S-12 *	3520/24 534 (600-½)	3520/55 534 (600-1)			
CIRCLING **	3520-1 524 (600-1)	3520-1½ 524 (600-1½)	3560-2 564 (600-2)	3700-2½ 704 (800-2½)	

HIRL Rwy 12-30

TACAN Z RWY 12

NW-1, 10 JUL 2025 to 07 AUG 2025

NW-1, 10 JUL 2025 to 07 AUG 2025