

## ILS or LOC Z RWY 30

LOC I-BRN <b><u>111.7</u></b>	APCH CRS <b>302°</b>	Rwy Idg <b>13,510</b> TDZE <b>2996</b> Arpt Elev <b>2996</b>
----------------------------------	-------------------------	--

[USAF]

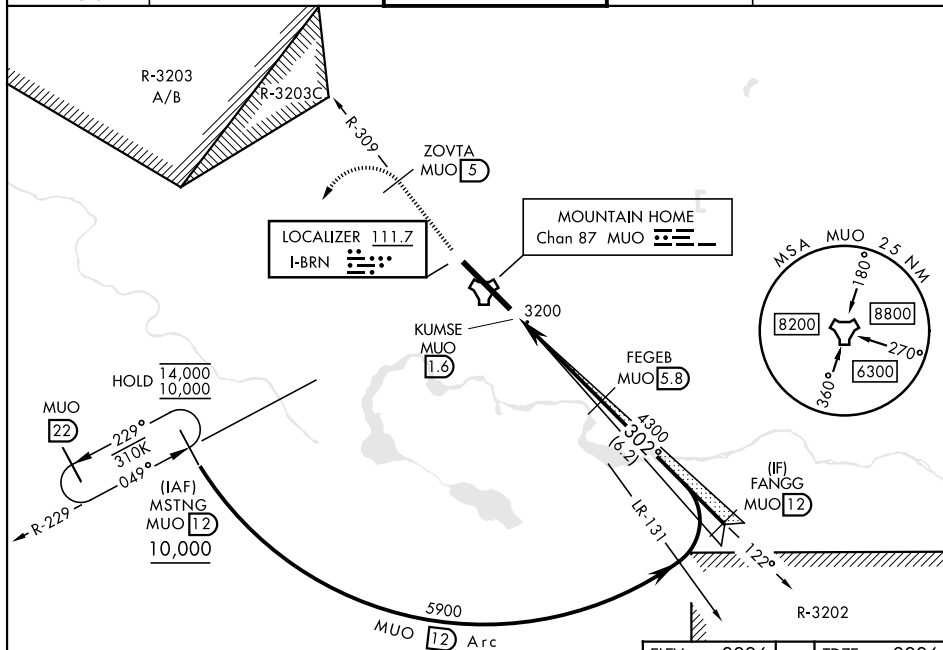
MOUNTAIN HOME AFB (KMUO)

RADAR or DME required.

ALSF-1

**MISSED APPROACH:** Climb to 10,000 via MUO R-309 to ZOVT/5 DME, turn left on hdg 169° to intercept MUO R-229 to MSTNG/12 DME and hold, continue climb-in-hold to 10,000.

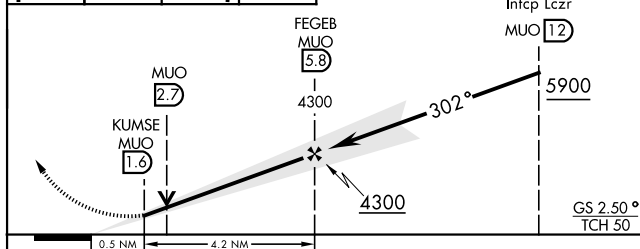
ATIS 273.5	MOUNTAIN HOME APP CON 124.8 259.1	MOUNTAIN HOME TOWER 133.85 253.5	GND CON 120.5 275.8	CLNC DEL 127.1 290.425
---------------	--------------------------------------	-------------------------------------	------------------------	---------------------------



EMERG SAFE ALT 100 NM 14,100

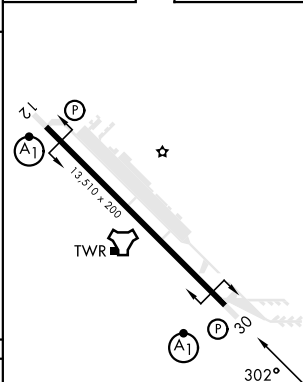
10,000 MUO R-309	ZOVTA MUO 5	 MUO R-229	MSTNG MUO 12
------------------------	-------------------	---	--------------------

VGSI and ILS glidepath not coincident  
(VGSI Angle 2.50/TCH 40).



CATEGORY	A	B	C	D	E
S-ILS 30 *	3196/24 200 (200-½)				
S-LOC 30 **	3480/24 484 (500-½)	3480/50 484 (500-1)			
C CIRCLING ***	3520-1 524 (600-1)	3520-1½ 524 (600-1½)	3560-2 564 (600-2)	3700-2½ 704 (800-2½)	

ELEV	2996		TDZE	2996
------	------	--	------	------



HIRL Rwy 12-30

FAF to MAP 4.2 NM

Knots	60	90	120	150	180
Min:Sec	4:12	2:48	2:06	1:41	1:24