

ILS or LOC Z RWY 12

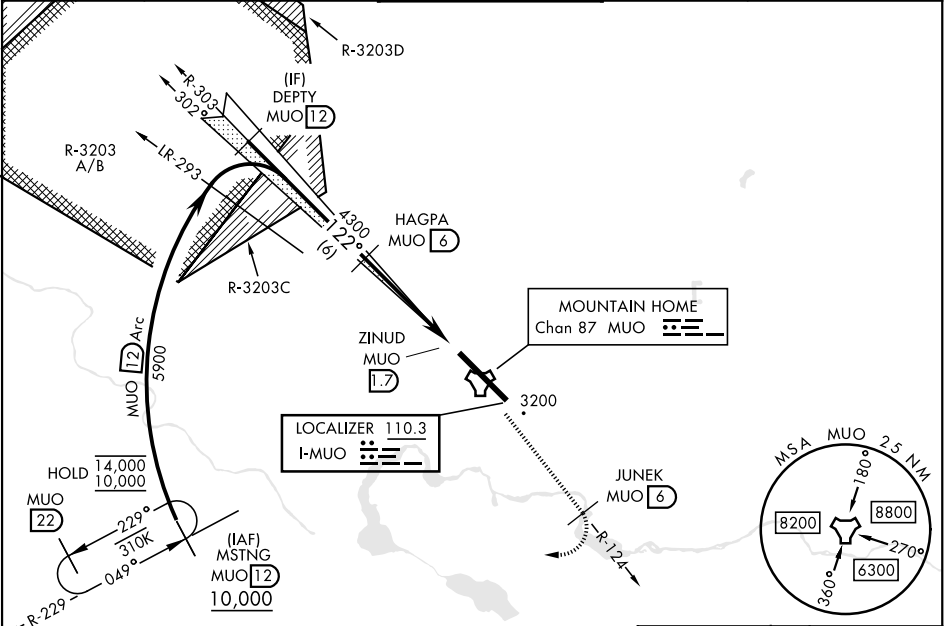
LOC I-MUO 110.3	APCH CRS 122°	Rwy Idg TDZE Arprt Elev 13,510 2986 2996
---------------------------	-------------------------	--

[USAF]

MOUNTAIN HOME AFB (KMUO)

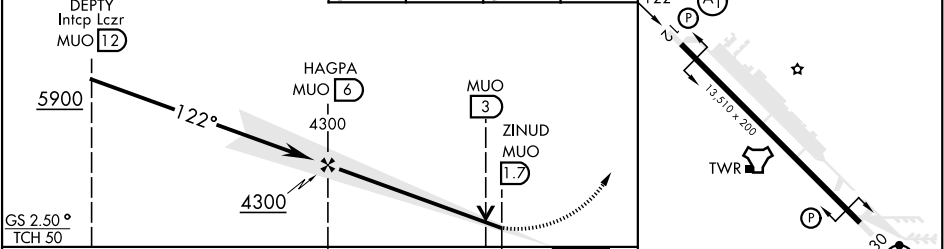
RADAR or DME required		ALSIF-1 	MISSED APPROACH: Climb to 10,000 on MUO TACAN R-124 to JUNEK/6 DME, then turn right on heading 289° to intercept MUO R-229 to MSTNG/12 DME and hold. Continue climb in hold to 10,000.
▼ * When ALS inop, increase RVR to 40, vis to ¾ mile. ** When ALS inop, increase CAT AB RVR to 55 and vis to 1 mile, CAT CDE vis to 1½ miles. *** Circling not authorized NE of Rwy 12-30.			

ATIS 273.5	MOUNTAIN HOME APP CON 124.8 259.1	MOUNTAIN HOME TOWER 133.85 253.5	GND CON 120.5 275.8	CLNC DEL 127.1 290.425
----------------------	---	--	-------------------------------	----------------------------------



EMERG SAFE ALT 100 NM 14,100	ELEV 2996	TDZE 2986
------------------------------	-----------	-----------

VGSI and ILS glidepath not coincident (VGSI Angle 2.50/TCH 41).		10,000 MUO R-124	JUNEK MUO 6	MUO R-229	MSTNG MUO 12
---	--	------------------	-------------	-----------	--------------



CATEGORY	A	B	C	D	E
S-ILS 12 *	3186/24		200	(200-½)	
S-LOC 12 **	3500/24	514 (600-½)	3500/55	514	(600-1)
*** C CIRCLING	3520-1	524 (600-1)	3520-1½ 524 (600-1½)	3560-2 564 (600-2)	3700-2½ 704 (800-2½)

HIRL Rwy 12-30					
FAF to MAP 4.3 NM					
Knots	60	90	120	150	180
Min:Sec	4:18	2:52	2:09	1:43	1:26

NW-1, 10 JUL 2025 to 07 AUG 2025

NW-1, 10 JUL 2025 to 07 AUG 2025