
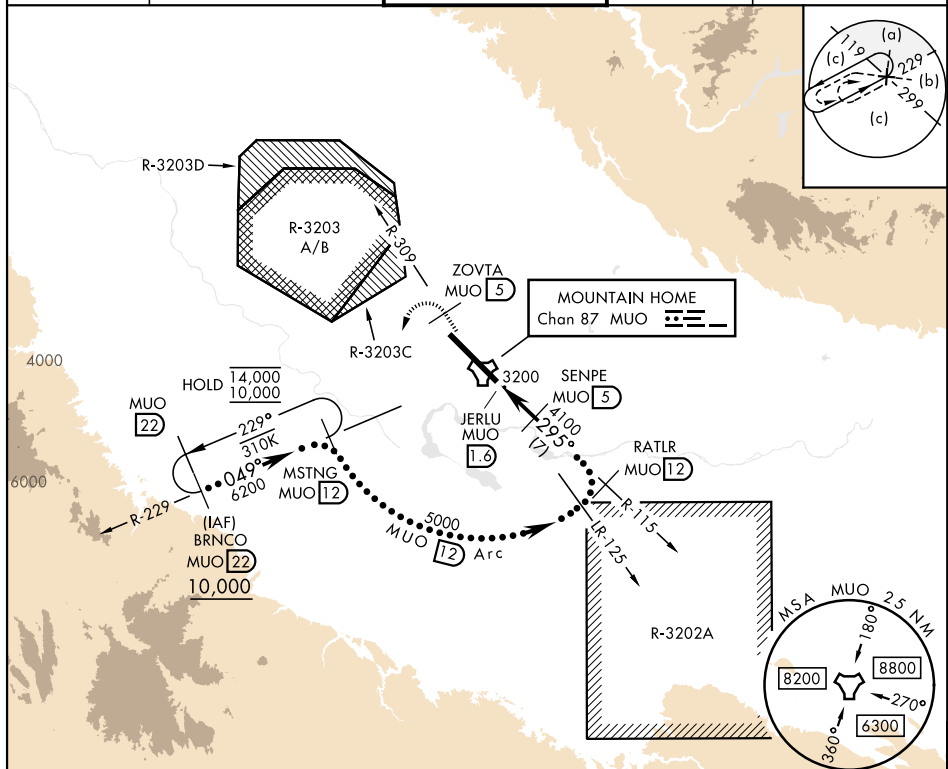


## HI-TACAN Y RWY 30

TACAN MUO Chan <b>87</b>	APCH CRS <b>295°</b>	Rwy Idg <b>13,510</b> TDZE <b>2996</b> Arpt Elev <b>2996</b>	[USAF]	MOUNTAIN HOME AFB (KMUO)		
<b>V</b> *When ALS inop, increase CAT CDE vis to 1½ miles. **Circling not authorized NE of Rwy 12-30.			ALSF-1 	MISSED APPROACH: Climb to 10,000 on MUO TACAN R-309 to ZOVT/5 DME, and then turn left heading 169° to intercept MUO R-229 to MSTNG/12 DME and hold, continue climb in hold to 10,000.		
ATIS <b>273.5</b>	MOUNTAIN HOME APP CON <b>124.8 259.1</b>		MOUNTAIN HOME TOWER <b>133.85 253.5</b>		GND CON <b>120.5 275.8</b>	CLNC DEL <b>127.1 290.425</b>



EMERG SAFE ALT 100 NM 14,100

10,000 ↑ MUO R-309	ZOVTA MUO 5	MUO R-229	MSTNG MUO 12	RATLR MUO 12	5000
MUO TACAN	JERLU MUO 1.6	MUO 2.9	SENPE MUO 5	295°	4100
0.5			3.4 NM		
CATEGORY			C	D	E
S-30 *			3520/55 524 (600-1)		
CIRCLING			3520-1½ 524 (600-1½)	3560-2 564 (600-2)	3700-2½ 704 (800-2½)

HIRL Rwy 12-30

MOUNTAIN HOME, IDAHO

43°03'N-115°52'W

MOUNTAIN HOME AFB (KMUO)

## HI-TACAN Y RWY 30

Amdt 4 12JUN25

H|RL Rwy 12-30

NW-1, 10 JUL 2025 to 07 AUG 2025

NW-1, 10 JUL 2025 to 07 AUG 2025