

STRRM ONE DEPARTURE (RNAV)

AL-322 (FAA)

PHOENIX SKY HARBOR INTL (PHX)

PHOENIX, ARIZONA

**TOP ALTITUDE:**  
8000

D-ATIS  
127.575  
CLNC DEL  
118.1 269.2  
CPDLC

GND CON

2 (NORTH)

2 (SOUTH)

PHOENIX TOWER

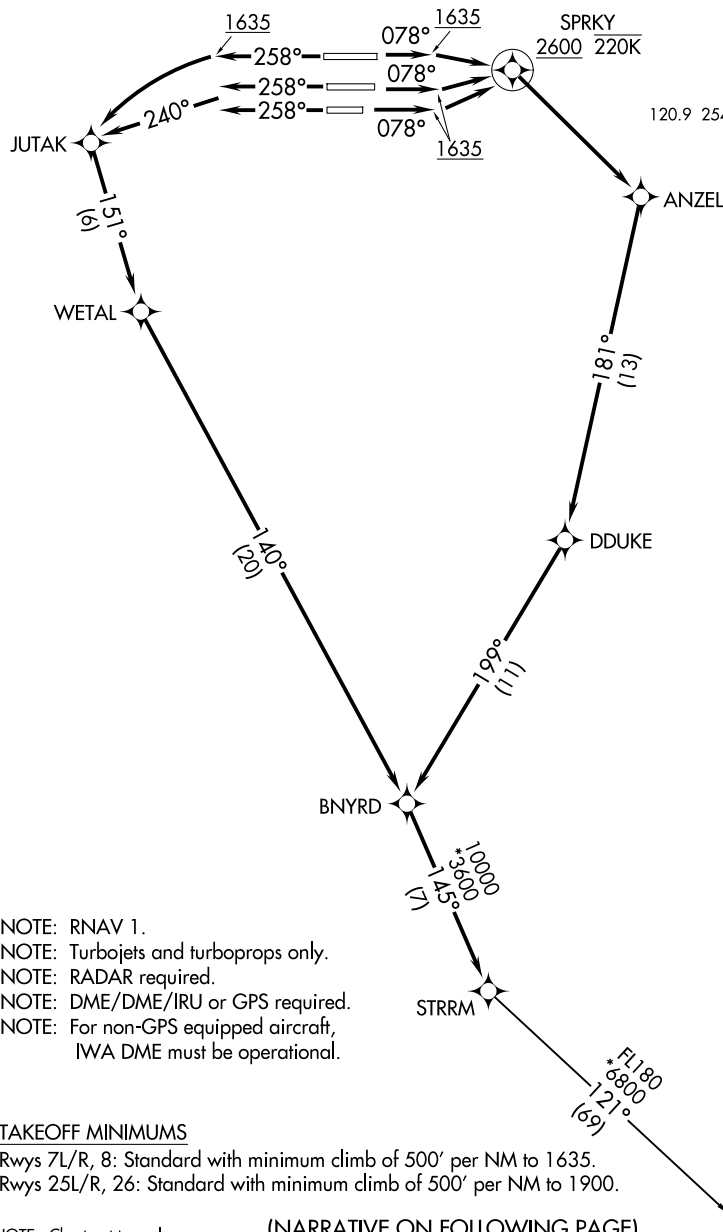
PHOENIX TOWER  
118.7 278.8 (D: 8.34)

2/8.8 (Rwy 8-26)  
71.05D, 7D.05U)

#### 4.3 (Rwys 7L-25R, 7R-25L)

PHOENIX DEP CON

126.8 269.6



NOTE: RNAV 1.

NOTE: Turbojets and turboprops only.

NOTE: RADAR required.

NOTE: DME/DME/IRU or GPS required.

NOTE: For non-GPS equipped aircraft,  
IWA DME must be operational.

## TAKEOFF MINIMUMS

Rwys 7L/R, 8: Standard with minimum climb of 500' per NM to 1635.

Rwys 25L/R, 26: Standard with minimum climb of 500' per NM to 1900.

NOTE: Chart not to scale.

(NARRATIVE ON FOLLOWING PAGE)

STRRM ONE DEPARTURE (RNAV)

(STRRM1.STRRM) 24MAY18

PHOENIX, ARIZONA

PHOENIX SKY HARBOR INTL (PHX)

SW-4, 10 JUL 2025 to 07 AUG 2025