

WAAS CH <b>86611</b> <b>W08A</b>	APP CRS <b>078°</b>	Rwy Idg <b>10591</b> TDZE <b>1118</b> Apt Elev <b>1135</b>
--	------------------------	--

RNAV (GPS) Y RWY 8  
PHOENIX SKY HARBOR INTL (PHX)

RNP APCH - GPS.

**T** Simultaneous approach authorized. LNAV procedure NA during simultaneous operations. Inop table does not apply to LPV all Cats.

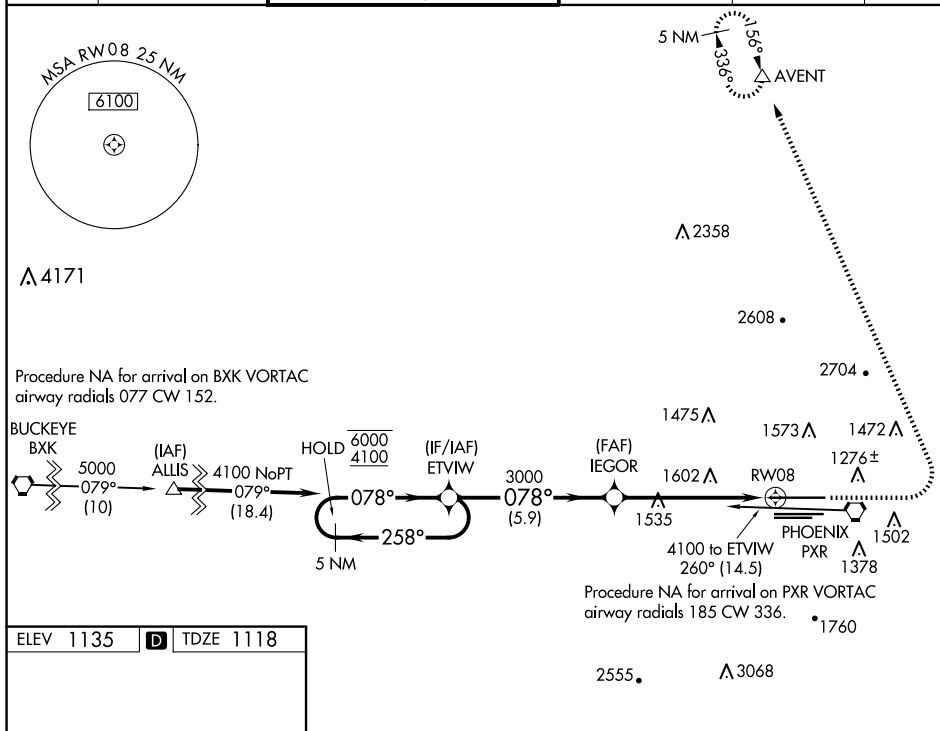
**A** For inop ALS, increase LNAV Cats C and D visibility to 2 SM.

MALSF



**MISSED APPROACH:** Climb to 3000 then climbing left turn to 5000 direct AVENT and hold.

D-ATIS <b>127.575</b>	PHOENIX APP CON <b>128.65 353.9</b>	PHOENIX TOWER <b>118.7 278.8</b> (Rwy 8-26) <b>120.9 254.3</b> (Rwy 7L-25R, 7R-25L)	GND CON <b>119.75 269.2</b> (N) <b>132.55 269.2</b> (S)	CLNC DEL <b>118.1 269.2</b>	CPDLC
--------------------------	--	---	---	--------------------------------	-------



**RWY 08-26**

VGSI and RNAV glidepath not coincident (VGSI Angle 3.00/TCH 69).

5 NM Holding Pattern

ET/VW

IEGOR

GP 3.00° TCH 54

3000

2.1 NM to RW08

RW08

AVENT

CATEGORY	A	B	C	D
LPV DA	1368- <sup>3</sup> / <sub>4</sub> 250 (300- <sup>3</sup> / <sub>4</sub> )			
LNAV MDA	1860- <sup>3</sup> / <sub>4</sub> 742 (800- <sup>3</sup> / <sub>4</sub> )	1860-1 742 (800-1)	1860-1 <sup>7</sup> / <sub>8</sub> 742 (800-1 <sup>7</sup> / <sub>8</sub> )	
CIRCLING	1860-1 725 (800-1)	1860-1 <sup>1</sup> / <sub>4</sub> 725 (800-1 <sup>1</sup> / <sub>4</sub> )	2040-2 <sup>3</sup> / <sub>4</sub> 905 (1000-2 <sup>3</sup> / <sub>4</sub> )	2340-3 1205 (1300-3)

HIRL Rwy's 8-26, 7L-25R and 7R-25L  
REIL Rwy 26