

QUAKY ONE DEPARTURE (RNAV)

AL-322 (FAA)

PHOENIX SKY HARBOR INTL (PHX)  
PHOENIX, ARIZONA

D-ATIS  
127.575  
CLNC DEL  
118.1 269.2  
CPDLC  
GND CON  
119.75 269.2 (NORTH)  
132.55 269.2 (SOUTH)  
PHOENIX TOWER  
118.7 278.8 (Rwy 8-26)  
120.9 254.3 (Rwys 7L-25R, 7R-25L)  
PHOENIX DEP CON  
119.2 281.45

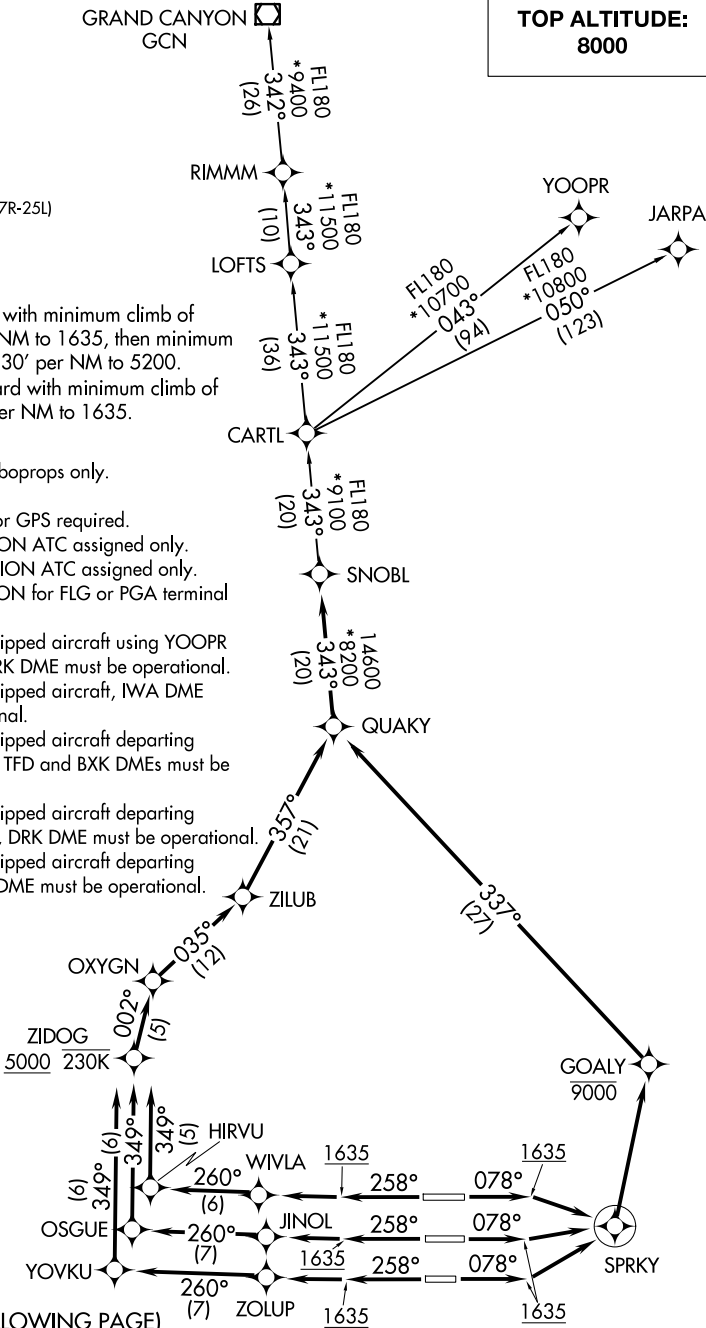
GRAND CANYON  
GCN

TOP ALTITUDE:  
8000

TAKEOFF MINIMUMS

Rwys 7L/R, 8: Standard with minimum climb of  
500' per NM to 1635, then minimum  
climb of 230' per NM to 5200.  
Rwys 25L/R, 26: Standard with minimum climb of  
500' per NM to 1635.

- NOTE: RNAV 1.  
NOTE: Turbojets and turboprops only.  
NOTE: RADAR required.  
NOTE: DME/DME/IRU or GPS required.  
NOTE: JARPA TRANSITION ATC assigned only.  
NOTE: YOOPR TRANSITION ATC assigned only.  
NOTE: CARTL TRANSITION for FLG or PGA terminal  
arrivals only.  
NOTE: For non-GPS equipped aircraft using YOOPR  
TRANSITION, DRK DME must be operational.  
NOTE: For non-GPS equipped aircraft, IWA DME  
must be operational.  
NOTE: For non-GPS equipped aircraft departing  
Rwys 25L/R, 26, TFD and BXK DMEs must be  
operational.  
NOTE: For non-GPS equipped aircraft departing  
Rwys 8, 25R, 26, DRK DME must be operational.  
NOTE: For non-GPS equipped aircraft departing  
Rwys 7L/R, PXR DME must be operational.



NOTE: Chart not to scale.

(NARRATIVE ON FOLLOWING PAGE)

QUAKY ONE DEPARTURE (RNAV)