

PHOENIX DEP CON

126.8 269.6

D-ATIS

127.575

CUNC DEL

118.1 269.2

GND CON

119.75 269.2 (NORTH)

132.55 269.2 (SOUTH)

PHOENIX TOWER

118.7 278.8 (Rwy 8-26)

120.9 254.3 (Rwys 7L-25R, 7R-25L)

TOP ALTITUDE:

8000

KEENS THREE DEPARTURE (RNAV)

(KEENS3.KEENS) 25JAN24

DEPARTURE ROUTE DESCRIPTION

TAKEOFF RUNWAYS 7L/R, 8: Climb on heading 078° to 1635, then direct FUTEP, then on track 132° to AZCRD, then on track 199° to USEYE, then on track 264° to cross MASVE at/above 7000 and at/below 220K, then on track 264° to OAKLI, then on track 268° to KEENS, thence. . . .

TAKEOFF RUNWAYS 25L/R: Climb on heading 258° to intercept course 240° to WULKO, then on track 268° to KEENS, thence. . . .

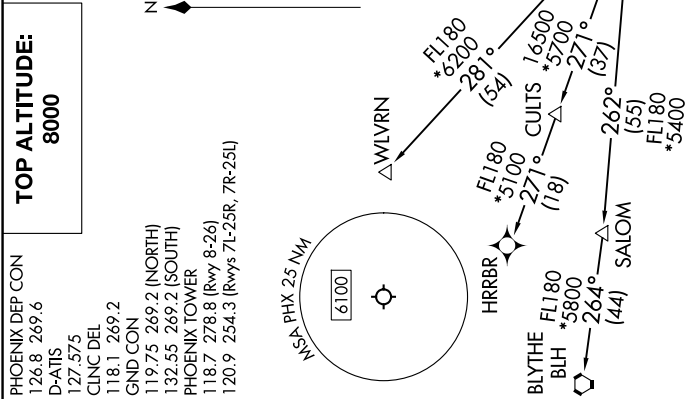
TAKEOFF RUNWAY 26: Climb on heading 258° to 1635, then left turn direct WULKO, then on track 268° to KEENS, thence. . . .

. . . on track 259° to IZZZO, then on (transition). Maintain 8000, expect higher altitude 3 minutes after departure.

BLYTHE TRANSITION (KEENS3.BLH)

HRRBR TRANSITION (KEENS3.HRRBR)

WLVRN TRANSITION (KEENS3.WLVRN)

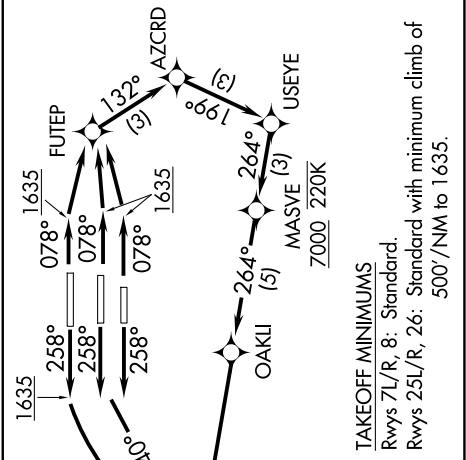


- NOTE: Turbojets and turboprops only.
- NOTE: Aircraft requesting FL220 and below must file BLYTHE Transition.
- NOTE: Turbojets landing LAX, file WLVRN Transition.
- NOTE: Aircraft landing other than LAX and turboprops landing at LAX: Requesting FL240 and above, file HRRBR Transition.

NOTE: Chart not to scale.

RNAV 1 - DME/DME/IRU or GPS required.

RADAR required.



TAKEOFF MINIMUMS

Rwys 7L/R, 8: Standard.

Rwys 25L/R, 26: Standard with minimum climb of 500'/NM to 1635.

KEENS THREE DEPARTURE (RNAV)

(KEENS3.KEENS) 25JAN24