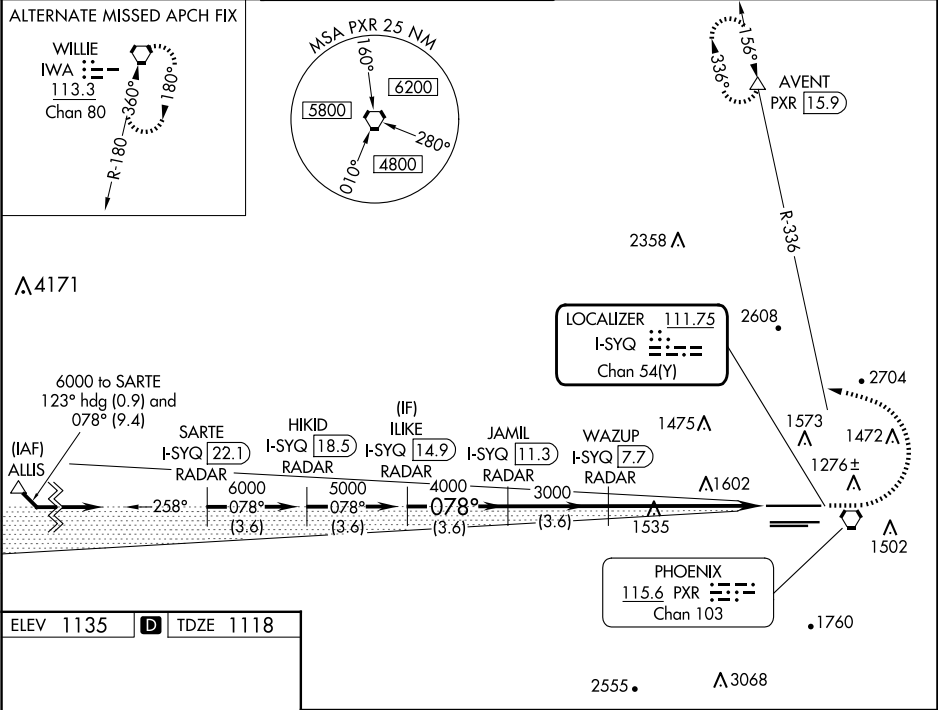


LOC/DME I-SYQ	APP CRS	Rwy Idg	10591
111.75	078°	TDZE	1118
Chan 54 (Y)		Apt Elev	1135

ILS or LOC RWY 8

PHOENIX SKY HARBOR INTL (PHX)

DME or RADAR required.		MALSF	MISSED APPROACH: Climb to 3000 then climbing left turn to 5000 on heading 280° and PXR VORTAC R-336 to AVENT INT/15.9 DME and hold.	
Autopilot coupled approach NA below 1307 MSL. Inop table does not apply to S-ILS 8. Simultaneous approach authorized. For inop ALS increase S-LOC 8 Cat C/D visibility to 2 SM.				
D-ATIS	PHOENIX APP CON	PHOENIX TOWER	GND CON	CLNC DEL
127.575	128.65 353.9	118.7 278.8 (Rwy 8-26) 120.9 254.3 (Rwy 7L-25R, 7R-25L)	119.75 269.2 (N) 132.55 269.2 (S)	118.1 269.2
				CPDLC



ELEV 1135	D	TDZE 1118
-----------	---	-----------

