

ILS or LOC RWY 26
PHOENIX SKY HARBOR INTL (PHX)

MISSED APPROACH: Climb to 2500 then climbing right turn to 5000 on heading 030° and PXR VORTAC R-336 to AVENT/PXR 15.9 DME and hold.

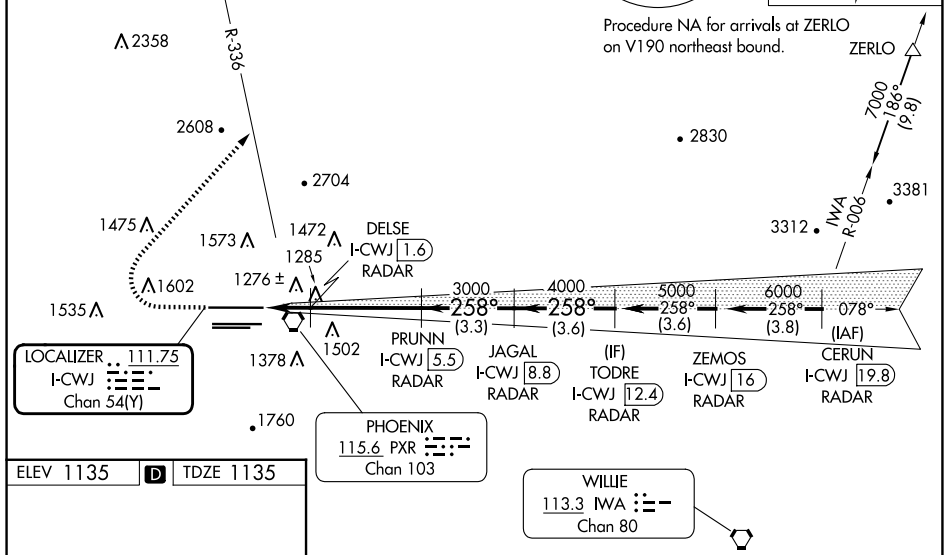


Diagram illustrating the HIRL and REIL approach charts for Runway 26. The HIRL chart shows a 258° approach with DME stations at 11489 X 150, 10300 X 150, and 7800 X 150. The REIL chart shows a 258° approach with a 1740* threshold. The diagram includes various navigation aids like PXR, AVENT, PRUNN, I-CWJ, and TODRE, along with their respective frequencies and DME channels. The diagram also shows the glide path angle of 3.00° and the threshold crossing height of 55 feet.

SW-4, 10 JUL 2025 to 07 AUG 2025