

TOP ALTITUDE:
8000

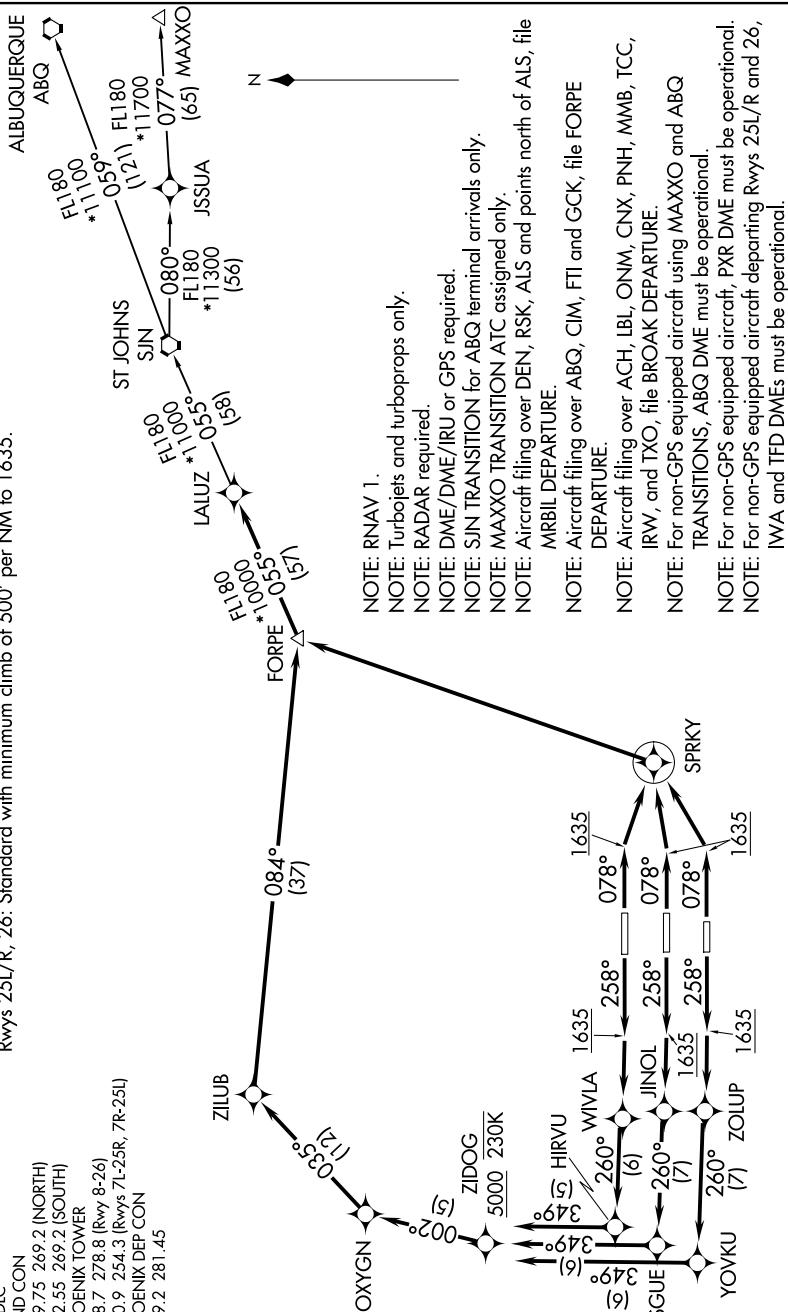
TAKEOFF MINIMUMS

Rwys 7L/R, 8: Standard with minimum climb of 500' per NM to 1635 then minimum climb of 250' per NM to 7300.
Rwys 25L/R, 26: Standard with minimum climb of 500' per NM to 1635.

D-ATIS
1127.575
CLINC D
1118.12
CPDLC
GND CCR
1119.75
1132.55
PHOENI
1118.72
1120.92
PHOENI
1119.22

FORPE ONE DEPARTURE (RNAV)
(FORPE1.FORPE) 24MAY18

PHOENIX, ARIZONA
PHOENIX SKY HARBOR INTL (PHX)



(NARRATIVE ON FOLLOWING PAGE)

NOTE: Chart not to scale.