

ECLPS ONE DEPARTURE (RNAV)

AL-322 (FAA)

PHOENIX SKY HARBOR INTL (PHX)  
PHOENIX, ARIZONA

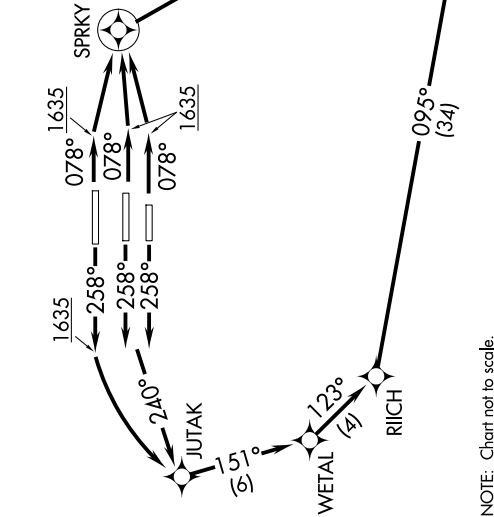
SW-4, 10 JUL 2025 to 07 AUG 2025

TOP ALTITUDE:  
8000

D-ATIS 127.575  
CLNC DEL 118.1 269.2  
CPDIC  
GND CON 119.75 269.2 (NORTH)  
132.55 269.2 (SOUTH)  
PHOENIX TOWER 118.7 278.8 (Rwy 8-26)  
120.9 254.3 (Rwys 7L-25R, 7R-25L)  
PHOENIX DEP CON 126.8 269.6

TAKEOFF MINIMUMS

Rwys 7L/R, 8: Standard with minimum climb of 500' per NM to 1635.  
Rwys 25L/R, 26: Standard with minimum climb of 500' per NM to 1900.



DEPARTURE ROUTE DESCRIPTION

TAKEOFF RUNWAYS 7L/R, 8: Climb heading 078° to 1635, then direct to SPRKY, then right turn direct ECLPS. Thence. . .  
TAKEOFF RUNWAYS 25L/R, 26: Climb heading 258° to intercept course 240° to JUTAK, then on track 151° to WETAL, then on track 123° to RIICH, then on track 095° to ECLPS. Thence. . .  
TAKEOFF RUNWAY 26: Climb heading 258° to 1635, then left turn direct JUTAK, then on track 151° to WETAL, then on track 123° to RIICH, then on track 095° to ECLPS. Thence. . .  
. . . on track 111° to KATMN. Then on (transition), expect filed altitude 3 minutes after departure.

PHASE TRANSITION (ECLPS1.PHASE)

- NOTE: RNAV 1.
- NOTE: Turbojets and turboprops only.
- NOTE: RADAR required.
- NOTE: DME/DME/IRU or GPS required.
- NOTE: For non-GPS equipped aircraft, TFD and DUG DMEs must be operational.

ECLPS ONE DEPARTURE (RNAV)

(ECLPS1.ECLPS) 24MAY18

PHOENIX, ARIZONA  
PHOENIX SKY HARBOR INTL (PHX)

SW-4, 10 JUL 2025 to 07 AUG 2025