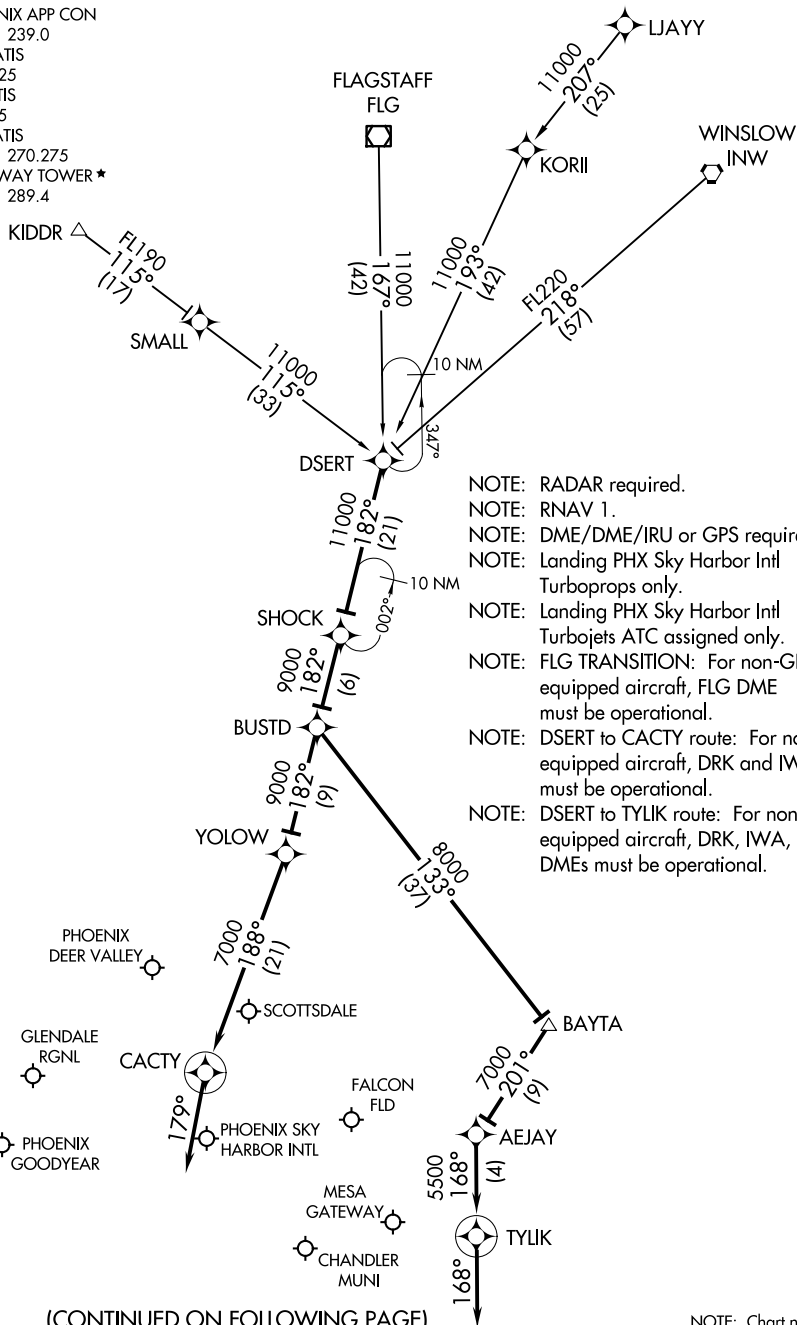


DESERT TWO ARRIVAL (RNAV)

AL-322 (FAA)

PHOENIX, ARIZONA

PHOENIX APP CON
120.7 239.0
CHD ATIS
128.325
FFZ ATIS
118.25
IWA ATIS
133.5 270.275
GATEWAY TOWER ★
120.6 289.4



NOTE: RADAR required.

NOTE: RNAV 1.

NOTE: DME/DME/IRU or GPS required.

NOTE: Landing PHX Sky Harbor Intl
Turboprops only.

NOTE: Landing PHX Sky Harbor Intl
Turbojets ATC assigned only.

NOTE: FLG TRANSITION: For non-GPS
equipped aircraft, FLG DME
must be operational.

NOTE: DSERT to CACTY route: For non-GPS
equipped aircraft, DRK and IWA DMEs
must be operational.

NOTE: DSERT to TYLIK route: For non-GPS
equipped aircraft, DRK, IWA, and PXR
DMEs must be operational.

(CONTINUED ON FOLLOWING PAGE)

NOTE: Chart not to scale.

DESERT TWO ARRIVAL (RNAV)

PHOENIX, ARIZONA

(DSERT.DSERT2) 13NOV14

SW-4, 10 JUL 2025 to 07 AUG 2025

SW-4, 10 JUL 2025 to 07 AUG 2025