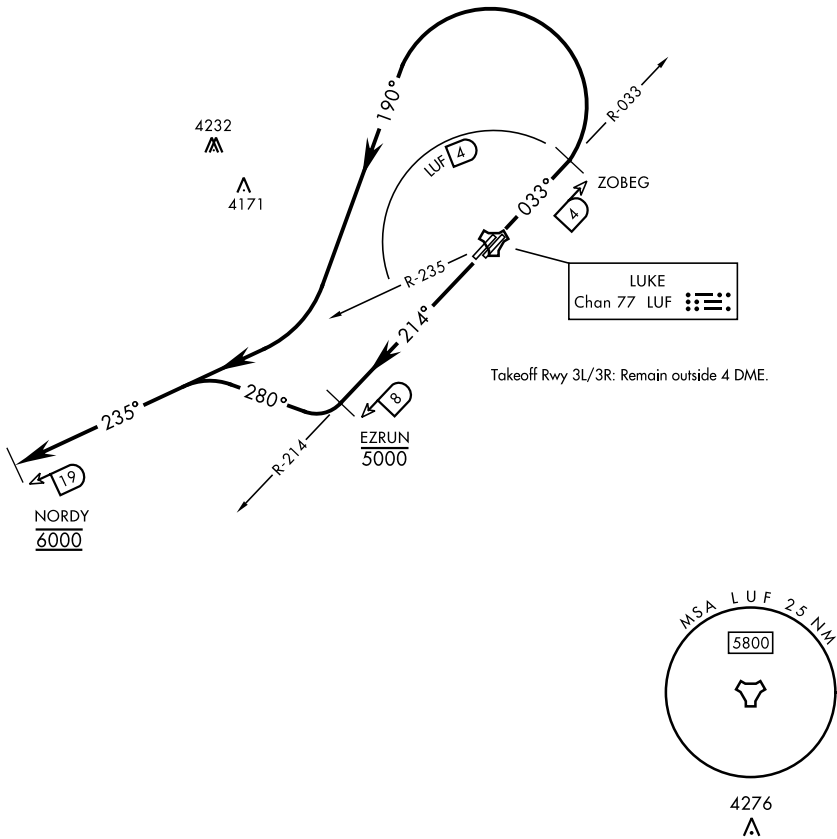


ATIS ★ 134.925 269.85 CLNC DEL ★ 126.25 273.475 GND CON ★ 133.175 335.8 TOWER ★ 119.1 379.9 DEP CON ★ 118.15 363.125	RADAR required	Rwy	Knots	60	120	180	240	300	360
		3L/R Ⓐ	V/V(fpm)	370	740	1110	1480	1850	2220
		21L/R Ⓑ	V/V(fpm)	280	560	840	1120	1400	1680
		Minimum Climb Rate							
		Ⓐ Climb to 6000							
		Ⓑ Climb to 5000							



▼

DEPARTURE ROUTE DESCRIPTION

TAKEOFF RWY 3L/R: Climb on heading 033° to 6000. Abeam ZOBEG turn left heading 190° to intercept LUF TACAN R-235 and proceed outbound to NORDY. Remain outside LUF 4 DME. Maintain 6000 until NORDY or as assigned by ATC.

TAKEOFF RWY 21L/R: Climb on heading 214° to 5000. Abeam EZRUN turn right heading 280° to intercept LUF TACAN R-235 and proceed outbound to NORDY. Climb and maintain 6000 until NORDY or as assigned by ATC.

SW-4, 10 JUL 2025 to 07 AUG 2025

SW-4, 10 JUL 2025 to 07 AUG 2025