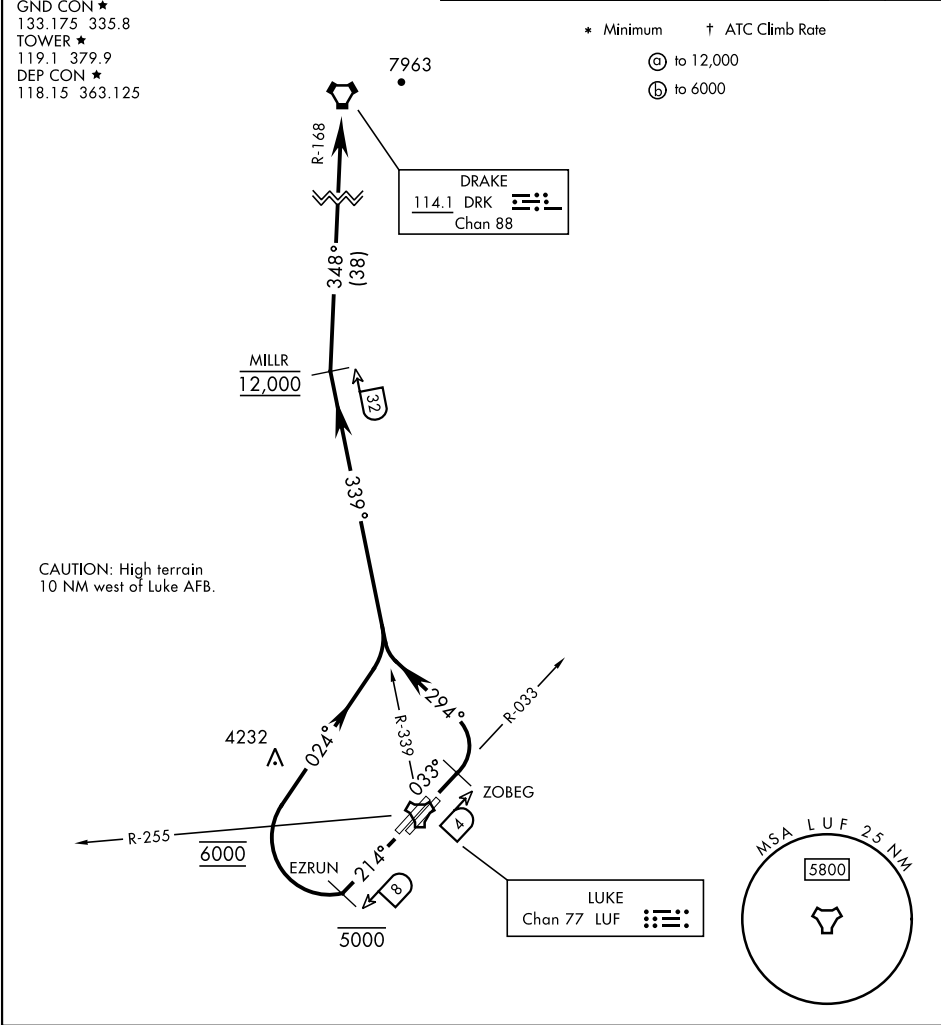


ATIS ★ 134.925 269.85	RADAR required	Rwy	Knots	60	120	180	240	300	360
CLNC DEL ★ 126.25 273.475		† 3 L/R ⓐ	V/V(fpm)	336	672	1008	1344	1680	2016
GND CON ★ 133.175 335.8		* 21 L/R ⓑ	V/V(fpm)	480	960	1440	1920	2400	2880



DEPARTURE ROUTE DESCRIPTION

TAKEOFF RWY 3 L/R: Climb heading 033° to 12,000. Abeam ZOBEG turn left heading 294° to intercept and proceed via LUF TACAN R-339 outbound to MILLR then via DRK VORTAC R-168 to DRK. Cross MILLR at 12,000 or as assigned by ATC.

TAKEOFF RWY 21 L/R: Climb heading 214° to 5000. Abeam EZRUN turn right heading 024° to intercept and proceed via LUF TACAN R-339 outbound to MILLR then via DRK VORTAC R-168 to DRK. Cross EZRUN at or below 5000. Cross LUF R-255 at 6000. Climb and maintain 12,000 until MILLR or as assigned by ATC.