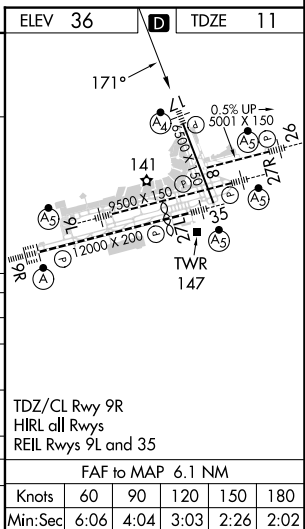


ILS Z or LOC RWY 17  
PHILADELPHIA INTL (PHL)

MAISE



**MISSED APPROACH:** Climb to 2000 then climbing right turn to 3000 direct OOD VORTAC and hold



CATEGORY	A	B	C	D
S-ILS 17	261/40 250 (300-¾)			
S-LOC 17	760/40 749 (800-¾)	760/55 749 (800-1)	760-1⅞ 749 (800-1⅞)	
CIRCLING	760-1 724 (800-1)	760-1¼ 724 (800-1¼)	760-2 724 (800-2)	760-2¼ 724 (800-2¼)
HOOCH FIX MINIMUMS				
S-LOC 17	480/40	469 (500-¾)	480/60	469 (500-1¼)
CIRCLING	540-1 504 (600-1)	600-1 564 (600-1)	620-1½ 584 (600-1½)	720-1½ 684 (700-1½)

NE-4, 10 JUL 2025 to 07 AUG 2025