

WAAS CH <b>86219</b> <b>W08A</b>	APP CRS <b>080°</b>	Rwy Idg <b>7000</b> TDZE <b>97</b> Apt Elev <b>121</b>
--	------------------------	--

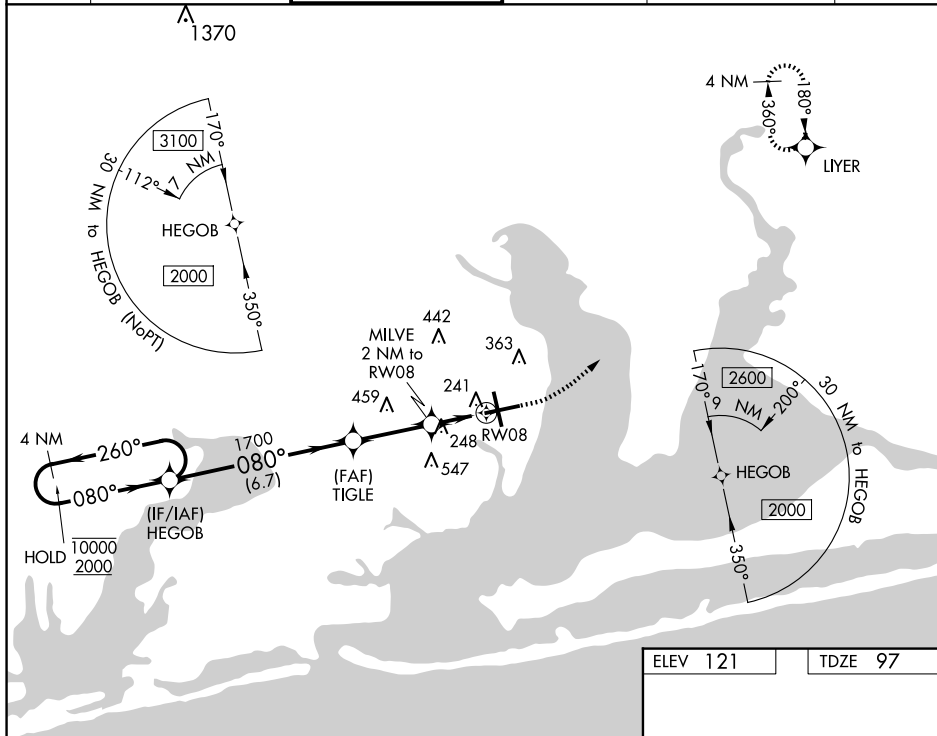
RNAV (GPS) RWY 8  
PENSACOLA INTL (PNS)

RNP APCH.

**T** Rwy 8 helicopter visibility reduction below  $\frac{3}{4}$  SM NA. For uncompensated  
**A** Baro-VNAV systems, LNAV/VNAV NA below 1°C or above 54°C.  
 CAUTION: Intensive VFR student training in vicinity of airport.

**MISSED APPROACH:** Climb to 600 then climbing left turn to 2200 direct LIYER and hold.

ATIS 121.25	PENSACOLA APP CON 119.0 269.375	PENSACOLA TOWER ★ 119.9 (CTAF) 0 257.8	GND CON 121.9 348.6	CLNC DEL 123.725 256.875	UNICOM 122.95
----------------	------------------------------------	---	------------------------	-----------------------------	------------------



SE-3, 10 JUL 2025 to 07 AUG 2025

