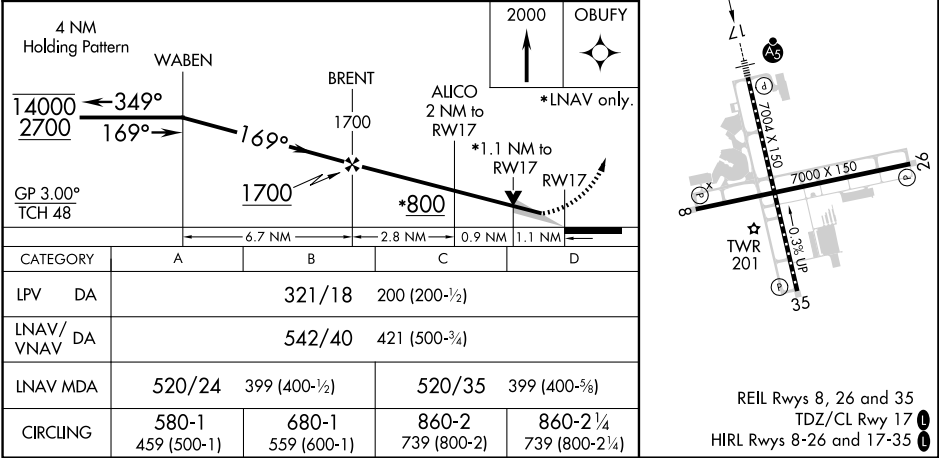
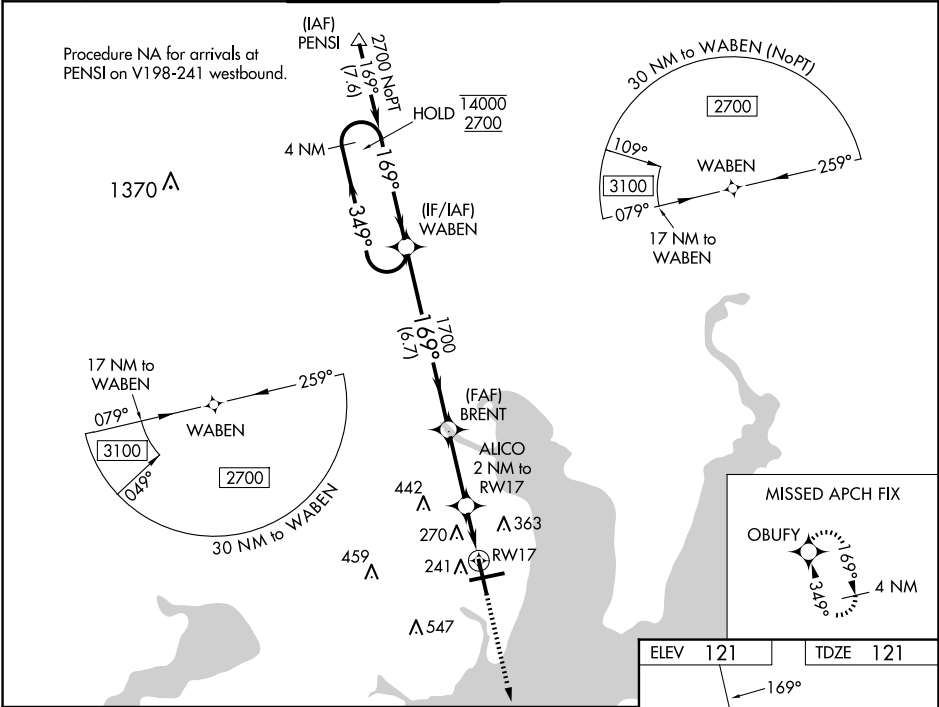


WAAS CH 97319 W17A	APP CRS 169°	Rwy Idg TDZE Apt Elev	7004 121 121
--	------------------------	-----------------------------	---

RNAV (GPS) RWY 17

PENSACOLA INTL (PNS)

RNP APCH.				MALSR		MISSED APPROACH: Climb to 2000 direct OBUFY and hold.	
For uncompensated Baro-VNAV systems, LNAV/VNAV NA below 1°C or above 54°C. CAUTION: Intensive VFR student training in vicinity of airport.							
ATIS 121.25	PENSACOLA APP CON 119.0 269.375	PENSACOLA TOWER ★ 119.9 (CTAF) 0 257.8	GND CON 121.9 348.6	CLNC DEL 123.725 256.875		UNICOM 122.95	



SE-3, 10 JUL 2025 to 07 AUG 2025

SE-3, 10 JUL 2025 to 07 AUG 2025