

VORTAC PDT	APP CRS	Rwy Idg	6301
114.7	079°	TDZE	1486
Chan 94		Apt Elev	1497

VOR RWY 8

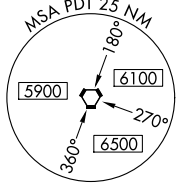
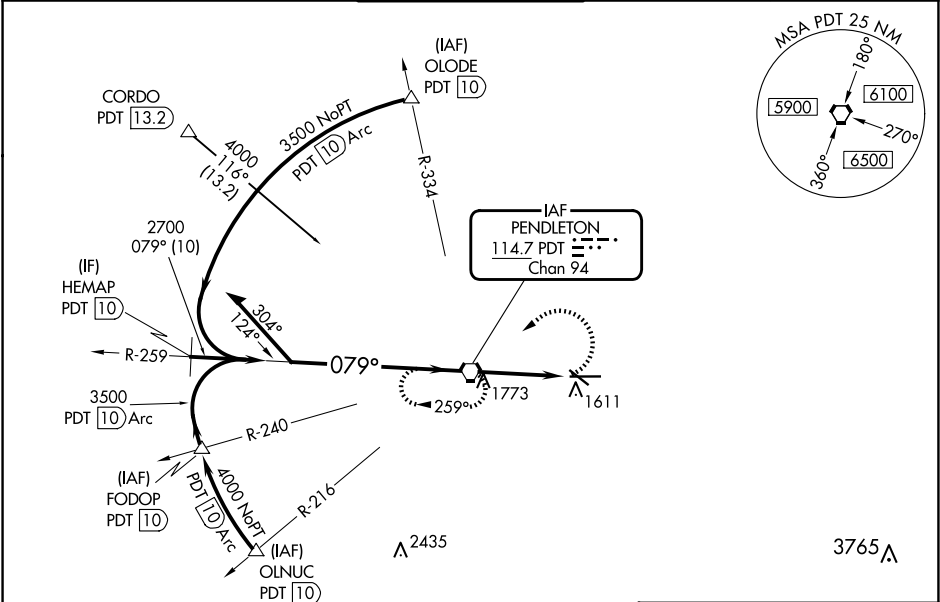
EASTERN OREGON RGNL AT PENDLETON (PDT)

**⚠** Circling to Rwy 11 NA at night. Rwy 8 helicopter visibility reduction below ¾ SM NA. VDP NA when using Walla Walla altimeter setting. When local altimeter setting not received, use Walla Walla altimeter setting and increase all MDA 140 feet, increase S-8 Cat C/D visibility to 1½ SM, Circling Cat C visibility ¼ SM and Cat D visibility ½ SM. For inop ALS, increase S-8 Cat C visibility to 1½ SM. For inop ALS when using Walla Walla altimeter setting, increase S-8 Cat C/D visibility to 2 SM.

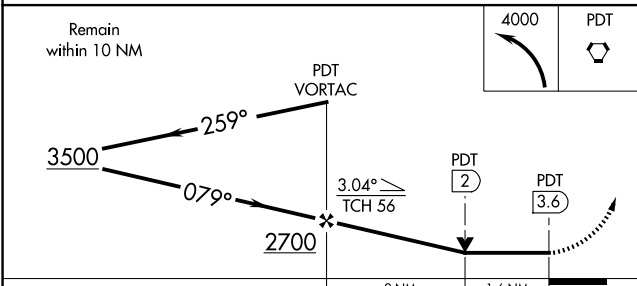
ODALS

MISSED APPROACH:  
Climbing left turn to 4000  
direct PDT VORTAC and  
hold, continue climb-in-  
hold to 4000.

ASOS	SPOKANE APP CON	PENDLETON TOWER	GND CON	UNICOM
118.325	133.15 379.15	119.7 (CTAF) 257.8	121.9 257.8	122.95



ELEV 1497	TDZE 1486
-----------	-----------



REIL Rwy 11 and 29  
MIRL Rwy 11-29  
HIRL Rwy 8-26

FAF to MAP 3.6 NM

Knots	60	90	120	150	180
Min:Sec	3:36	2:24	1:48	1:26	1:12

NW-1, 10 JUL 2025 to 07 AUG 2025

NW-1, 10 JUL 2025 to 07 AUG 2025