

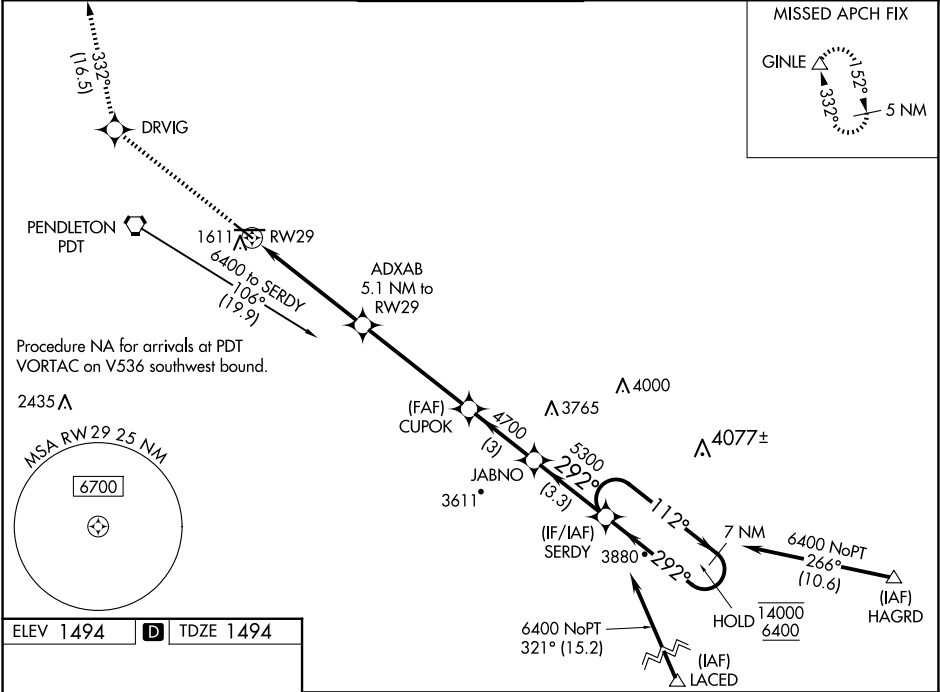
WAAS CH <b>42513</b> <b>W29A</b>	APP CRS <b>292°</b>	Rwy Idg <b>4808</b> TDZE <b>1494</b> Apt Elev <b>1494</b>
--	------------------------	---

RNAV (GPS) RWY 29

EASTERN OREGON RGNL AT PENDLETON (PDT)

RNP APCH - GPS.		MISSED APPROACH: Climb to 5000 direct DRVIG and on track 332° to GINLE and hold.	
▼ Rwy 29 helicopter visibility reduction below 1 SM NA. ⚠ Baro-VNAV NA. Straight-in Rwy 29 NA at night, Circling Rwy 8, 29 NA at night.			

ASOS <b>118.325</b>	SPOKANE APP CON* <b>133.15 379.15</b>	PENDLETON TOWER* <b>119.7 (CTAF) 0 257.8</b>	GND CON <b>121.9 257.8</b>	UNICOM <b>122.95</b>
------------------------	--	---	-------------------------------	-------------------------



REIL Rwy 11 and 29 **1**  
MIRL Rwy 11-29 **1**  
HIRL Rwy 8-26 **1**

5000 ↑		DRVIG ✦		tr 332°		GINLE △		SERDY 7 NM Holding Pattern			
ADXB 5.1 NM to RW29		CUPOK 4700		JABNO		292° 5300		112°→ 14000 ← 292° 6400			
RW29		3140		4700		GP 3.00° TCH 51					
5.1 NM		4.9 NM		3 NM		3.3 NM					
CATEGORY		A		B		C		D			
LPV DA		1769-1		275 (300-1)							
LNAV/ VNAV DA		1800-1		306 (400-1)							
LNAV MDA		1880-1		386 (400-1)		1880-1½		386 (400-1½)			
<b>C</b> CIRCLING		1920-1 426 (500-1)		1960-1 466 (500-1)		1980-1½ 486 (500-1½)		2200-2¼ 706 (800-2¼)			