

WAAS CH 82712 W11A	APP CRS 112°	Rwy Idg 4808 TDZE 1487 Apt Elev 1497
--	------------------------	---

RNAV (GPS) RWY 11

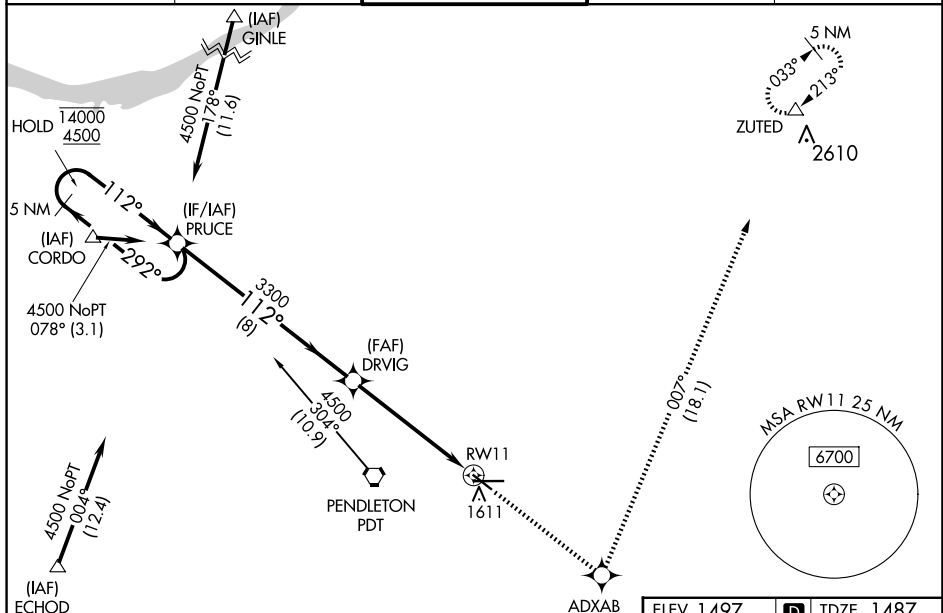
EASTERN OREGON RGNL AT PENDLETON (PDT)

RNP APCH.

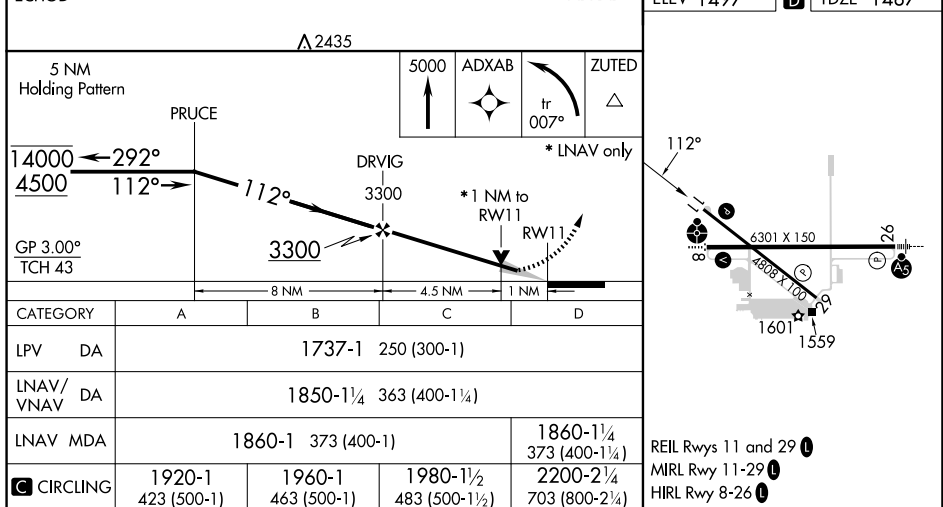
▼ Baro-VNAV and VDP NA when using Walla Walla altimeter setting. For uncompensated
▲ Baro-VNAV systems, LNAV/VNAV NA below -17°C or above 54°C. When local
altimeter setting not received, use Walla Walla altimeter setting and increase all DA/MDA
120 feet; VNAV all Cats visibility $\frac{1}{2}$ SM, LNAV Cat C visibility $\frac{3}{8}$ SM, and Cat D visibility
 $\frac{1}{8}$ SM, Circling Cat C visibility $\frac{1}{4}$ SM and Circling Cat D visibility $\frac{1}{8}$ SM.

MISSED APPROACH:
Climb to 5000 direct
ADXAB and on track
007° to ZUTED and hold.

ASOS 118,325	SPOKANE APP CON ★ 133.15 379.15	PENDLETON TOWER ★ 119.7 (CTAF) 0 257.8	GND CON 121.9 257.8	UNICOM 122.95
-----------------	------------------------------------	---	------------------------	------------------



NW-1, 10 JUL 2025 to 07 AUG 2025



PENDLETON, OREGON
Orig-A 15AUG19

EASTERN OREGON RGNL AT PENDLETON (PDT)

RNAV (GPS) RWY 11

45°42'N-118°51'W