

LOC I-PDT <b>110.3</b>	APP CRS <b>254°</b>	Rwy Idg TDZE Apt Elev	<b>6301</b> <b>1487</b> <b>1497</b>
---------------------------	------------------------	-----------------------------	---

ILS or LOC RWY 26

EASTERN OREGON RGNL AT PENDLETON (PDT)

DME required.

▼

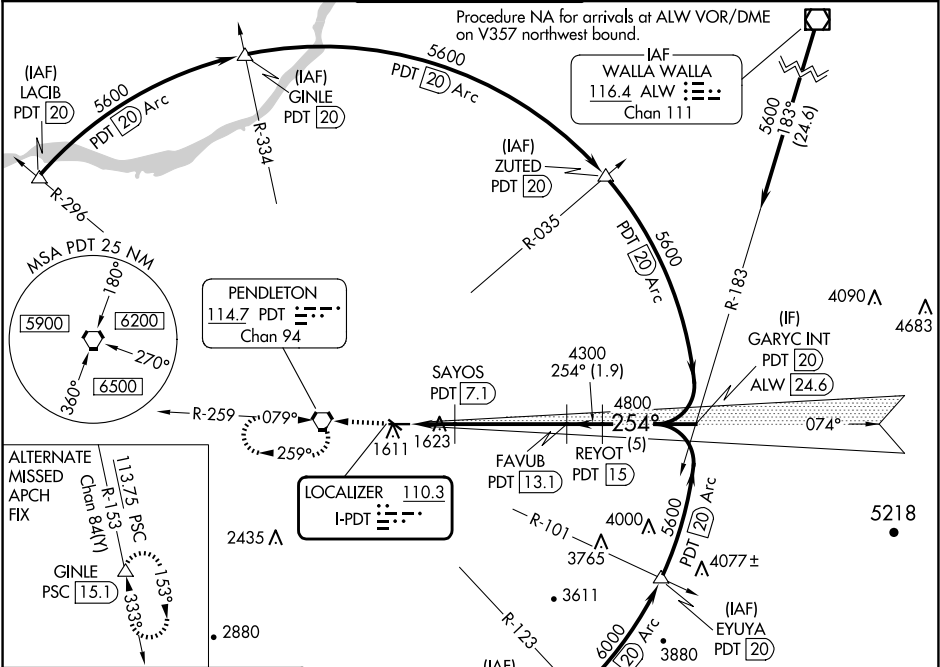
⚠

DME from PDT VORTAC. Simultaneous reception of I-PDT and PDT DME required.  
\*RVR 1800 authorized with use of FD or AP or HUD to DA.

MALSR

MISSED APPROACH: Climb to 4200 direct PDT VORTAC and hold, continue climb-in-hold to 4200.

ASOS <b>118.325</b>	SPOKANE APP CON * <b>133.15 379.15</b>	PENDLETON TOWER * <b>119.7 (CTAF) 257.8</b>	GND CON <b>121.9 257.8</b>	UNICOM <b>122.95</b>
------------------------	---	--	-------------------------------	-------------------------





ELEV 1497

TDZE 1487

REIL Rwy 11 and 29

MIRL Rwy 11-29

HIRL Rwy 8-26

4200 ↑	PDT 	VGSI and ILS glidepath not coincident (VGSI Angle 3.00/TCH 48).		GARYC INT PDT <u>20</u>	
		FAYUB PDT <u>13.1</u>	REYOT PDT <u>15</u>		
	SAYOS PDT <u>7.1</u>	4300	254°	5600	
	PDT <u>5.7</u>		4800		
	PDT <u>4.6</u>	2320	4300	GS 3.00° TCH 55°	
	1.1 NM	1.4 NM	6 NM	1.9 NM	5 NM
CATEGORY	A	B	C	D	
S-ILS 26*	1687/24 200 (200-½)				
S-LOC 26	1880/24	393 (400-½)	1880/40	393 (400-¾)	
 CIRCLING	1920-1 423 (500-1)	1960-1 463 (500-1)	1980-1½ 483 (500-1½)	2200-2¼ 703 (800-2¼)	

NW-1, 10 JUL 2025 to 07 AUG 2025

NW-1, 10 JUL 2025 to 07 AUG 2025