

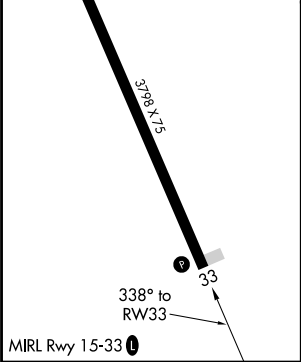
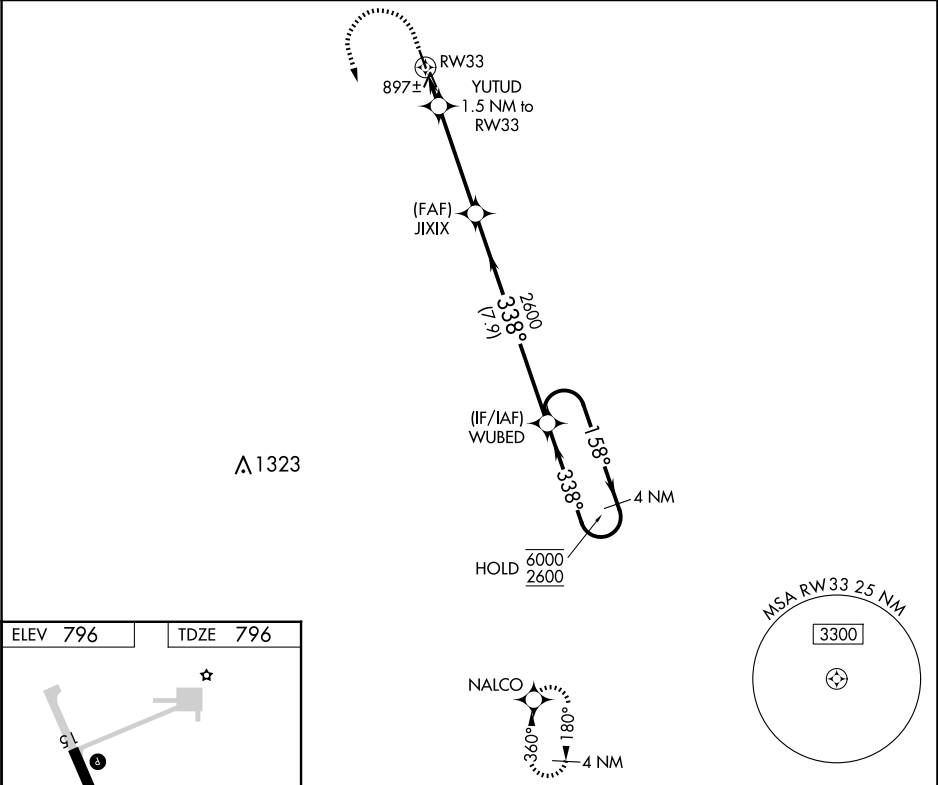
APP CRS	Rwy Idg	3798
338°	TDZE	796
	Apt Elev	796

RNAV (GPS) RWY 33

PEMBINA MUNI (PMB)

RNP APCH+GPS.	MISSED APPROACH: Climb to 1200 then climbing left turn 2600 direct NALCO and hold.
<div><div>▼</div><div>▲NA</div></div> Circling Rwy 15 NA at night. Obtain local altimeter setting on CTAF; when not received, use Hallock altimeter setting and increase all MDA 60 feet and LNAV Cat C visibility ¼ SM.	

MINNEAPOLIS CENTER 132.15 269.6	UNICOM 122.8 (CTAF) 0
------------------------------------	--------------------------



1200	2600	NALCO	VGSI and descent angles not coincident (VGSI Angle 3.00/TCH 26).	
↑	↶	✧	JIXIX	WUBED
YUTUD 1.5 NM to RW33		↘ 3.00° TCH 40	↖ 338°	↗ 158°
RW33		1320	2600	6000 2600
1.5		4.1 NM	7.9 NM	4 NM Holding Pattern
CATEGORY	A	B	C	D
LNAV MDA	1160-1 364 (400-1)			NA
<div>Ⓢ</div> CIRCLING	1200-1 404 (500-1)	1260-1 464 (500-1)	1260-1½ 464 (500-1½)	NA