

TACAN Z RWY 6

TACAN NHK Chan 39 (Y)	APCH CRS 067°	Rwy Idg 11,799 TDZE 39 Arpt Elev 39
--------------------------	------------------	---

- (USN)

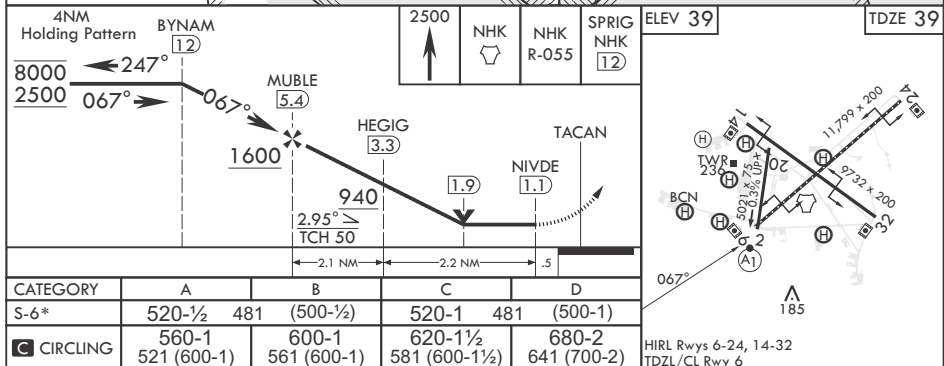
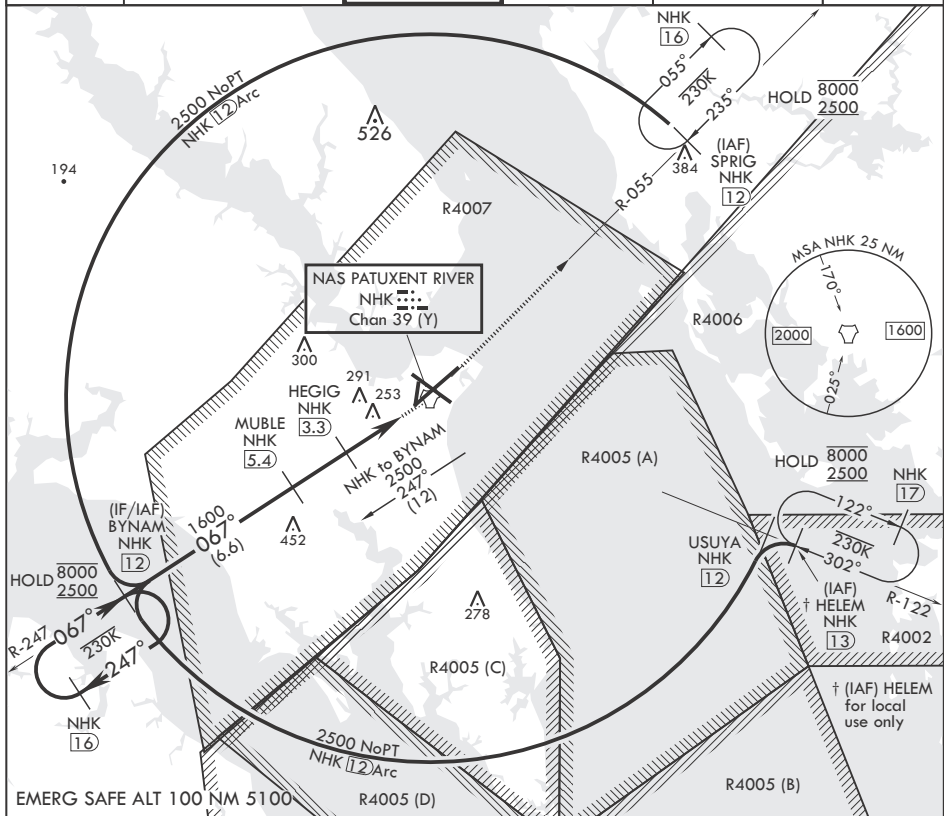
PATUXENT RIVER NAS (TRAPNELL FLD) (KNHK)

T * When ALS inop, increase CAT AB vis to 1 mile, CAT CD vis to 1 3/8 miles.

ALSF-1

MISSED APPROACH: Climb to 2500 direct NHK TACAN and NHK R-055 to SPRIG and hold.

ATIS 322.425	APP CON/DEP CON* 121.0 250.3	TOWER 123.7 343.65	GND CON 120.6 336.4	CLNC DEL 135.2 316.125	ASR/PAR
-----------------	---------------------------------	-----------------------	------------------------	---------------------------	---------



PATUXENT RIVER, MARYLAND

38°17'N - 76°25'W PATUXENT RIVER NAS (TRAPNELL FLD) (KNHK)

Orig 02DEC21

TACAN Z RWY 6

NE-3, 10 JUL 2025 to 07 AUG 2025

NE-3, 10 JUL 2025 to 07 AUG 2025