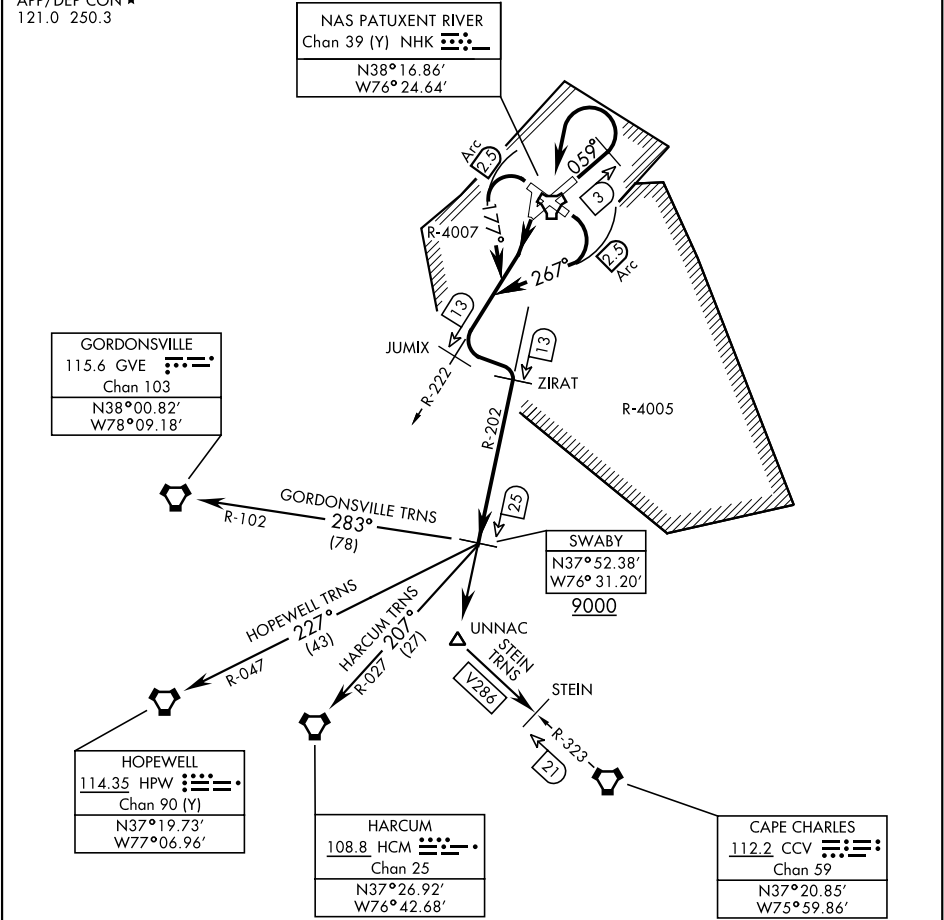


ATIS 322.425 CLNC DEL	TACAN required	Knots	60	120	180	240	300	360
		V/V(fpm)	310	620	930	1240	1550	1860

ATC Climb Rate to 9000

Departure Rwy 2-20 not authorized.  
Minimum filing alt 10,000.



ATC BRIEF  
REQUIRED  
135.2 316.125