

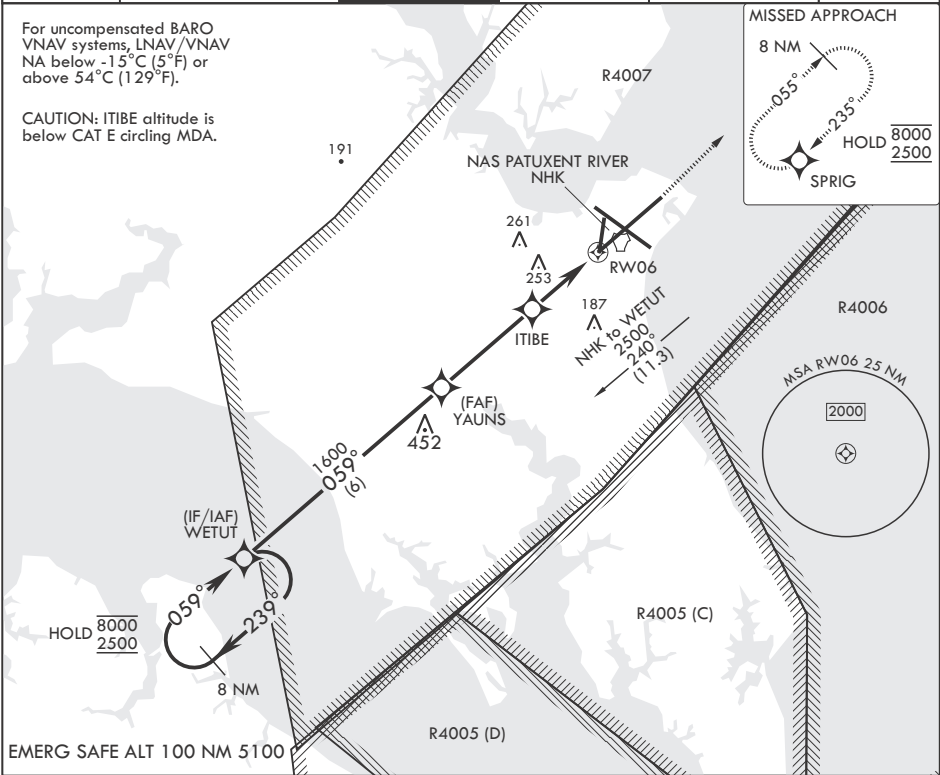
RNAV (GPS) RWY 6

APCH CRS	Rwy Idg	11,799
059°	TDZE	39
	Arprt Elev	39

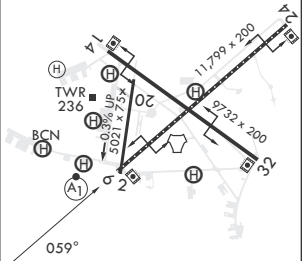
- (USN) PATUXENT RIVER NAS (TRAPNELL FLD) (KNHK)

RNP APCH	ALSIF-1	MISSED APPROACH: Climb to 700 then climbing left turn to 2500 direct SPRIG and hold.
* When ALS inop, increase vis to 1 3/8 miles. ** When ALS inop, increase CAT AB vis to 1 mile, CAT CD vis to 1 3/8 miles.		

ATIS	APP CON/DEP CON*	TOWER	GND CON	CLNC DEL	ASR/PAR
322.425	121.0 250.3	123.7 343.65	120.6 336.4	135.2 316.125	



8 NM Holding Pattern	WETUT	700	2500	SPRIG	ELEV 39	TDZE 39
8000 2500	059° 239°	059°	059°			
GP 3.00° TCH 46	YAUNS	1600	720	1.2 NM to RWY 06		
				2.8 NM	2 NM	
CATEGORY	A	B	C	D	E	
LNAV/VNAV DA*	480-1 <sup>3</sup> / <sub>8</sub>	441	441	(500-1 <sup>3</sup> / <sub>8</sub> )		
LNAV MDA**	480-1	441 (500-1)	480-1 <sup>3</sup> / <sub>8</sub>	441 (500-1 <sup>3</sup> / <sub>8</sub> )		
CIRCLING	540-1 501 (600-1)	560-1 521 (600-1)	620-1 <sup>1</sup> / <sub>2</sub> 581 (600-1 <sup>1</sup> / <sub>2</sub> )	680-2 641 (700-2)	820-2 <sup>3</sup> / <sub>4</sub> 781 (800-2 <sup>3</sup> / <sub>4</sub> )	



RNAV (GPS) RWY 6

NE-3, 10 JUL 2025 to 07 AUG 2025

NE-3, 10 JUL 2025 to 07 AUG 2025