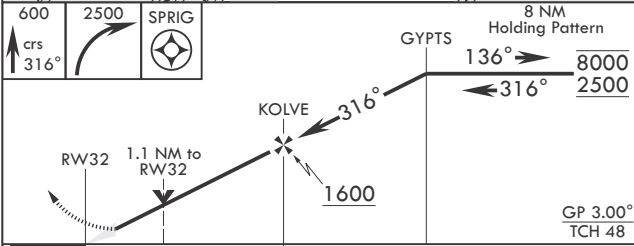
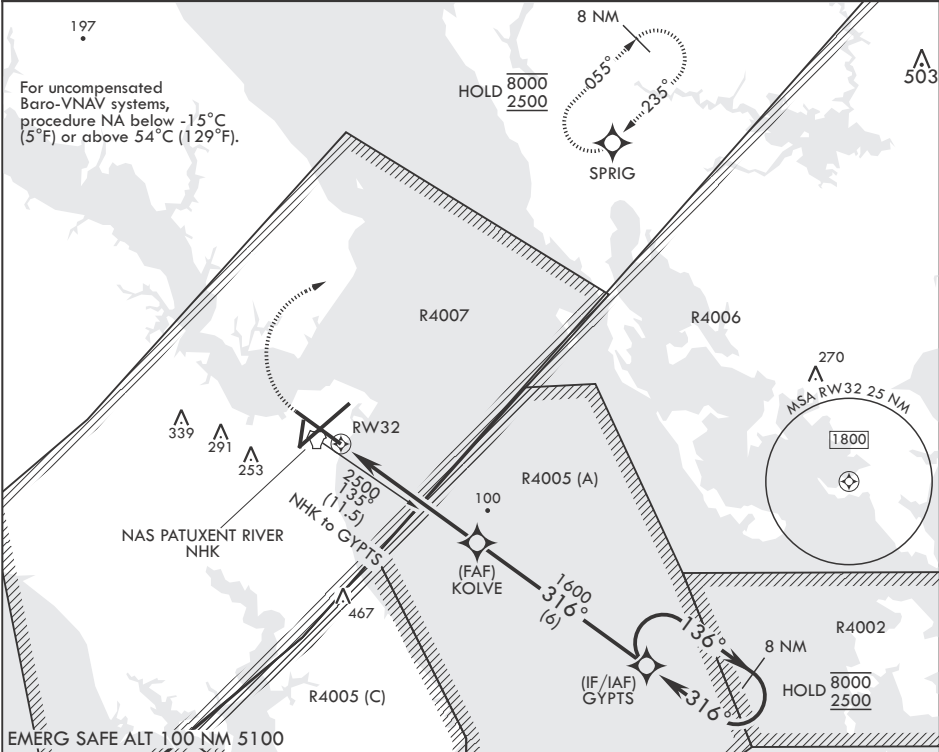


APCH CRS	Rwy Idg	9732
316°	TDZE	18
	Arprt Elev	39

(USN) PATUXENT RIVER NAS (TRAPNELL FLD) (KNHK)

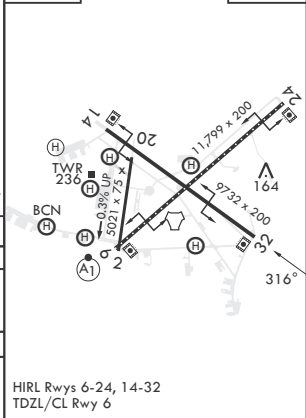
RNP APCH	MISSED APPROACH: Climb to 600, then climbing right turn to 2500 direct SPRIG and hold.
----------	--

ATIS 322.425	APP CON/DEP CON* 121.0 250.3	TOWER 123.7 343.65	GND CON 120.6 336.4	CLNC DEL 135.2 316.125	ASR/PAR
-----------------	---------------------------------	-----------------------	------------------------	---------------------------	---------



ELEV 39	TDZE 18
---------	---------

CATEGORY	A	B	C	D	E
LNAV/VNAV DA	295- <sup>7</sup> / <sub>8</sub> 277 (300- <sup>7</sup> / <sub>8</sub> )	306- <sup>7</sup> / <sub>8</sub> 288 (300- <sup>7</sup> / <sub>8</sub> )	314- <sup>7</sup> / <sub>8</sub> 296 (300- <sup>7</sup> / <sub>8</sub> )	325- <sup>7</sup> / <sub>8</sub>	307 (300- <sup>7</sup> / <sub>8</sub> )
LNAV MDA	420-1	402 (400-1)	420-1 <sup>1</sup> / <sub>2</sub>	402	(400-1 <sup>1</sup> / <sub>2</sub> )
CIRCLING	540-1 501 (600-1)	560-1 521 (600-1)	620-1 <sup>1</sup> / <sub>2</sub> 581 (600-1 <sup>1</sup> / <sub>2</sub> )	680-2 641 (700-2)	820-2 <sup>3</sup> / <sub>4</sub> 781 (800-2 <sup>3</sup> / <sub>4</sub> )



NE-3, 10 JUL 2025 to 07 AUG 2025

NE-3, 10 JUL 2025 to 07 AUG 2025