

APCH CRS	Rwy Idg	9732
136°	TDZE	27
	Arprt Elev	39

- (USN) PATUXENT RIVER NAS (TRAPNELL FLD) (KNHK)

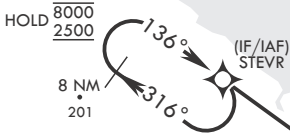
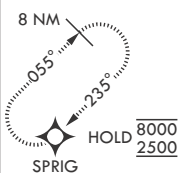
RNP APCH	MISSED APPROACH: Climb to 600, then climbing left turn to 2500 direct SPRIG and hold.
RADAR required	

ATIS	APP CON/DEP CON*	TOWER	GND CON	CLNC DEL	ASR/PAR
322.425	121.0 250.3	123.7 343.65	120.6 336.4	135.2 316.125	

For uncompensated Baro-VNAV systems, Procedure NA below -15°C (5°F) or above 54°C (129°F).

CAUTION: WCH group 4 acft: 16 feet is less than minimum 20 feet.

MISSED APPROACH

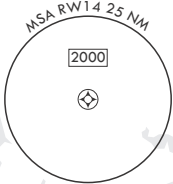


475

ST MARYS COUNTY RGNL

(FAF) KOSSE

R4007



EMERG SAFE ALT 100 NM 5100



NAS PATUXENT RIVER NHK

8 NM Holding Pattern	STEV	600	2500	SPRIG	ELEV 39	TDZE 27
8000	316°	136°	136°	1600	1.4 NM to RW14	4.8 NM
2500	136°	136°	136°	1600	1.4 NM to RW14	4.8 NM
GP 3.00°						
TCH 41						
CATEGORY	A	B	C	D	E	
LNAV/VNAV DA	367-1 340 (400-1)	378-1 351 (400-1)	386-1 359 (400-1)	397-1 370 (400-1)		
LNAV MDA	500-1 473 (500-1)	500-1 473 (500-1)	500-1 473 (500-1)	500-1 473 (500-1)		
CIRCLING	540-1 501 (600-1)	560-1 521 (600-1)	620-1 581 (600-1)	680-2 641 (700-2)	820-2 781 (800-2)	

