

PATUXENT RIVER, MARYLAND

ILS or LOC/DME RWY 6

LOC/DME I-NHK	APCH CRS	Rwy ldg
108.7	059°	11,799
Chan 24	TDZE	39
	Arpt Elev	39

[USN]

PATUXENT RIVER NAS (TRAPNELL FIELD) (KNHK)

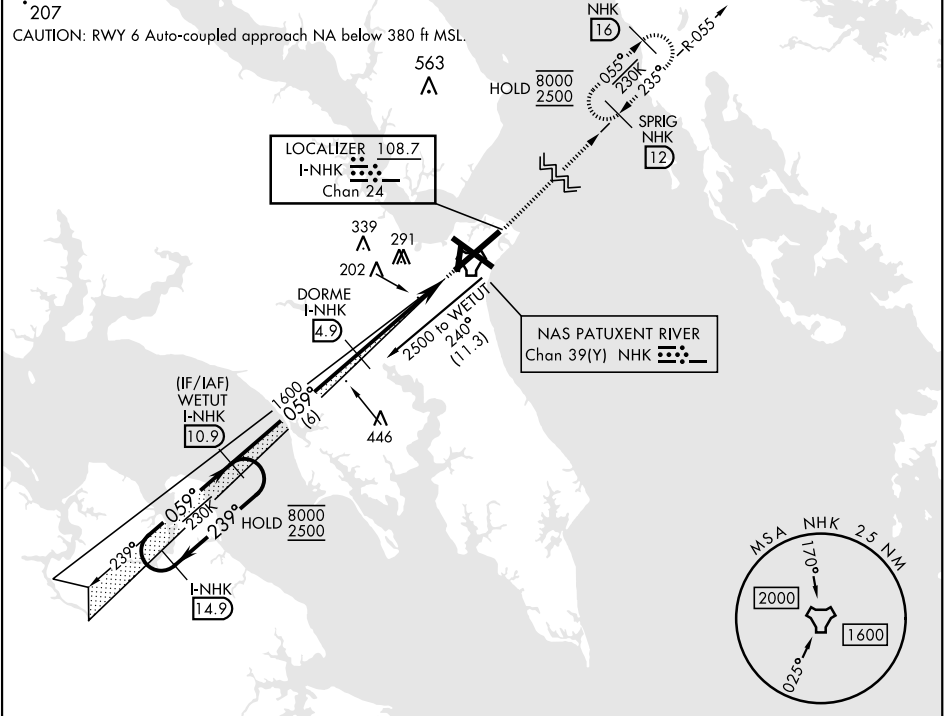
▼ \* When ALS inop, increase vis to ¾ mile.  
\*\* When ALS inop, increase CAT AB vis to 1 mile;  
CAT CD vis to 1½ miles.



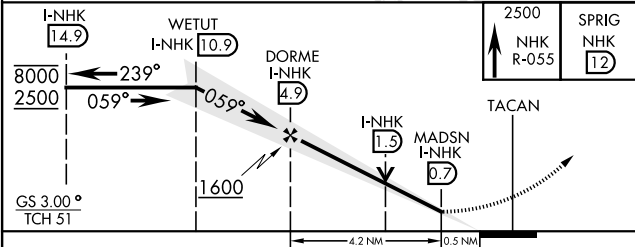
MISSED APPROACH: Climb to 2500 heading 059° and intercept NHK TACAN R-055 to SPRIG and hold.

ATIS	APP/DEP CON *	TOWER	GND CON	CLNC DEL	ASR/PAR
322.425	121.0 250.3	123.7 343.65	120.6 336.4	135.2 316.125	

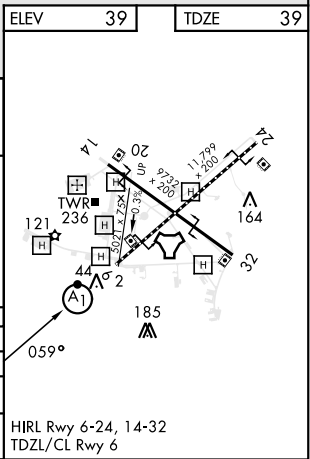
\* 207  
CAUTION: RWY 6 Auto-coupled approach NA below 380 ft MSL.



EMERG SAFE ALT 100 NM 5100



CATEGORY	A	B	C	D
S-ILS 6 *	239-½	200	(200-½)	
S-LOC 6 **	500-½ 461 (500-½)	500-1 461 (500-1)		
✪ CIRCLING	560-1 521 (600-1)	600-1 561 (600-1)	620-1½ 581 (600-1½)	680-2 641 (700-2)



PATUXENT RIVER, MARYLAND

38° 17' N-76° 25' W

PATUXENT RIVER NAS (TRAPNELL FIELD) (KNHK)

Orig 02DEC21

ILS or LOC/DME RWY 6

NE-3, 10 JUL 2025 to 07 AUG 2025

NE-3, 10 JUL 2025 to 07 AUG 2025