


TACAN NHK Chan 39 (Y)	APCH CRS 302°	Rwy Idg 9732 TDZE 18 Arprt Elev 39
---------------------------------	-------------------------	---

- (USN) PATUXENT RIVER NAS (TRAPNELL FLD) (KNHK)

	MISSED APPROACH: Climb to 500, then climbing right turn to 2500 on NHK TACAN R-122 to HELEM and hold.
---	---

ATIS 322.425	APP CON/DEP CON* 121.0 250.3	TOWER 123.7 343.65	GND CON 120.6 336.4	CLNC DEL 135.2 316.125	ASR/PAR
-----------------	---------------------------------	-----------------------	------------------------	---------------------------	---------

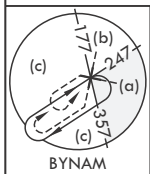
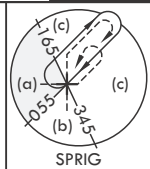
253

For LOCAL USE ONLY

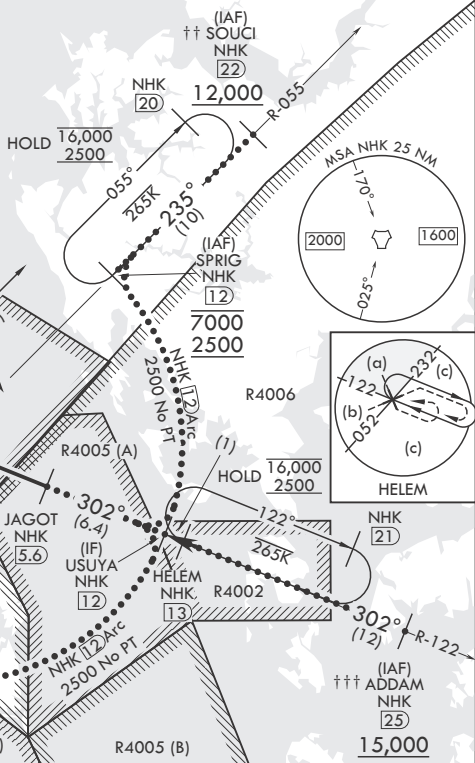
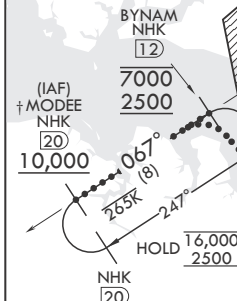
† 10,000 or as assigned

†† 12,000 or as assigned

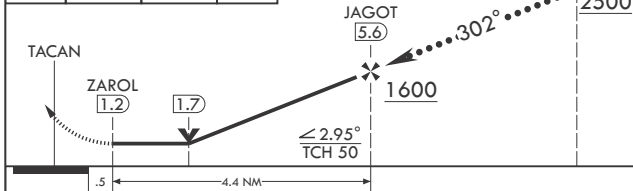
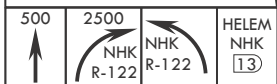
††† 15,000 or as assigned




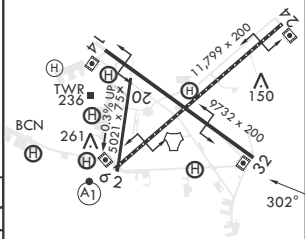
NAS PATUXENT RIVER
NHK
Chan 39 (Y)



EMERG SAFE ALT 100 NM 5100



CATEGORY	C	D	E
S-32	400-1 $\frac{1}{8}$	382	(400-1 $\frac{1}{8}$)
 CIRCLING	620-1 $\frac{1}{2}$ 581 (600-1 $\frac{1}{2}$)	680-2 641 (700-2)	800-2 $\frac{3}{4}$ 761 (800-2 $\frac{3}{4}$)



HIRL Rwys 6-24, 14-32
TDZL/CL Rwy 6

PATUXENT RIVER, MARYLAND

38°17'N - 76°25'W PATUXENT RIVER NAS (TRAPNELL FLD) (KNHK)

Orig 02DEC21

HI-TACAN Y RWY 32