

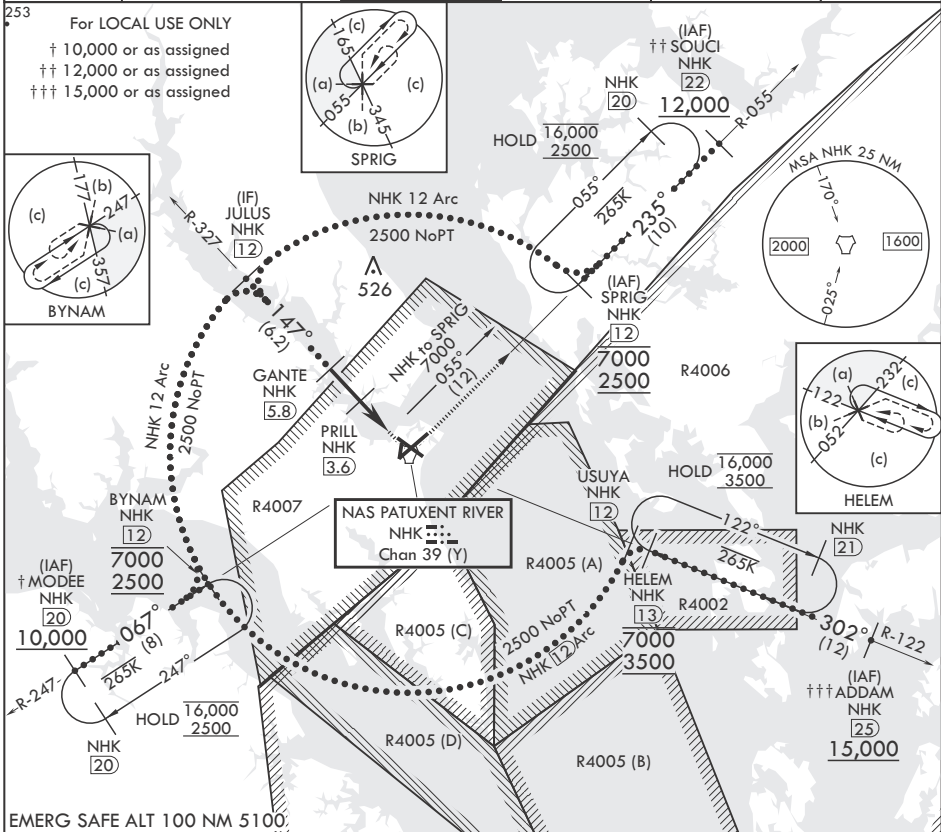
HI-TACAN Y RWY 14

TACAN NHK Chan 39 (Y)	APCH CRS 147°	Rwy ldg TDZE Arpt Elev	9732 27 39
--------------------------	------------------	------------------------------	------------------

- (USN) PATUXENT RIVER NAS (TRAPNELL FLD) (KNHK)

MISSED APPROACH: Climb to 500, then climbing left turn to 2500 on NHK TACAN R-055 to SPRIG and hold.

ATIS 322.425	APP CON/DEP CON* 121.0 250.3	TOWER 123.7 343.65	GND CON 120.6 336.4	CLNC DEL 135.2 316.125	ASR/PAR
-----------------	---------------------------------	-----------------------	------------------------	---------------------------	---------



JULUS 12	GANTE 5.8	PRILL 3.6	TACAN	ZUXUL 1.5	SPRIG NHK 12	ELEV 39	TDZE 27
2500	1600	900	2	2	2500	147°	
2.98° ≥ TCH 50	2.2 NM	2.1 NM	.5				
CATEGORY	C	D	E				
S-14	400-1	373	(400-1)				
CIRCLING	620-1½ 581 (600-1½)	680-2 641 (700-2)	800-2¾ 761 (800-2¾)				

HI-TACAN Y RWY 14