

TACAN Z RWY 32R

TACAN PAM Chan 64	APCH CRS 326°	Rwy Idg 10,008 TDZE 14 Arpt Elev 17
-----------------------------	-------------------------	----------------------------------------------------------------

[USAF]

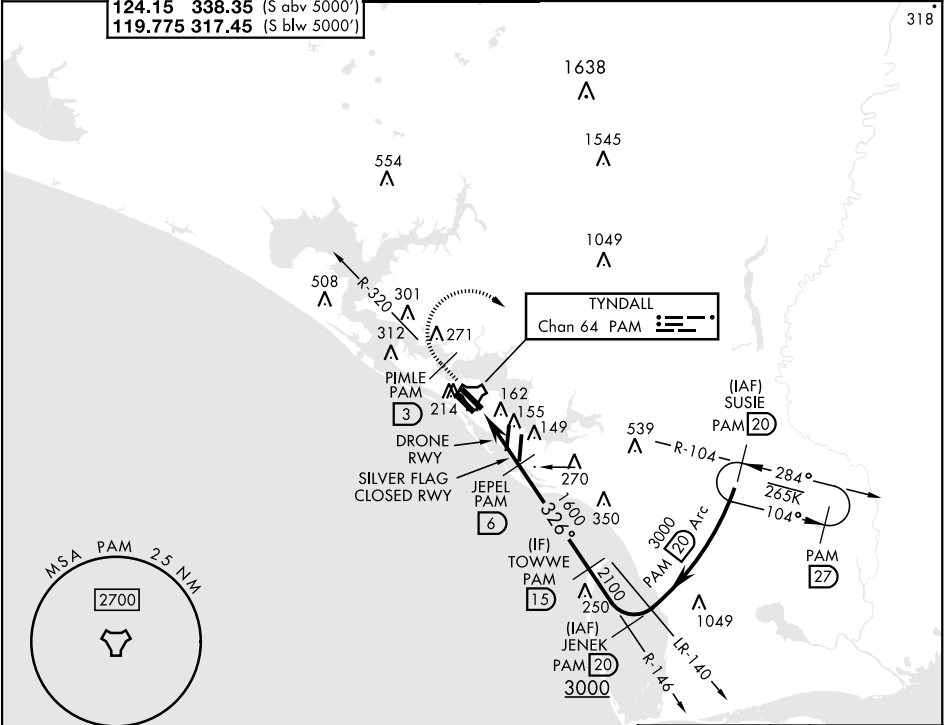
TYNDALL AFB (KPAM)

⚠ * When ALS inop, increase CAT AB RVR to 55, vis to 1 mile; CAT CDE vis to 1 ½ miles.

ALSF-1

MISSED APPROACH: Track outbound PAM TACAN R-320 to 3 DME (PIMLE), then turn right to join PAM R-104 to 20 DME (SUSIE) and hold. Maintain 3000.

ATIS ★ 254.4	APP CON 125.2 392.1 (N abv 5000') 120.825 379.3 (N blw 5000') 124.15 338.35 (S abv 5000') 119.775 317.45 (S blw 5000')	TOWER★ 133.95 263.15	GND CON 121.9 259.3	CLNC DEL 118.05 348.7	ASR/PAR
------------------------	----------------------------------------------------------------------------------------------------------------------------------------------------------------	--------------------------------	-------------------------------	---------------------------------	---------



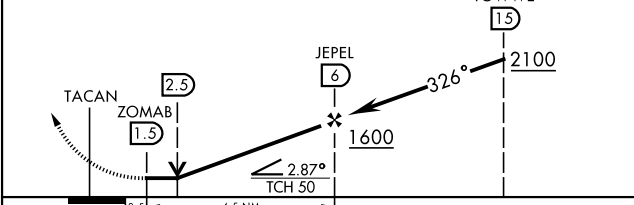
ELEV 17	TDZE 14
---------	---------

3000 PAM R-320

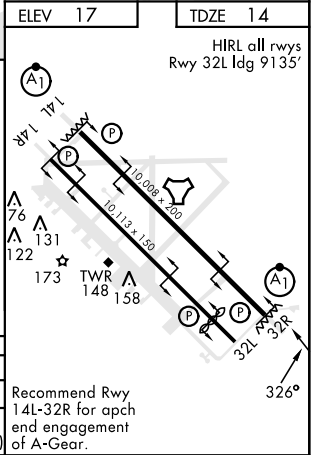
PIMLE PAM 3

SUSIE PAM 20

VGSI and descent angles not coincident (VGSI Angle 2.50/TCH 50).



CATEGORY	A	B	C	D	E
S-32R*	480/24	466 (500-½)	480/50	466 (500-1)	
CIRCLING	540-1	523 (600-1)	540-1½ 523 (600-½)	580-2 563 (600-2)	620-2¼ 603 (700-2¼)



TACAN Z RWY 32R

SE-3, 10 JUL 2025 to 07 AUG 2025

SE-3, 10 JUL 2025 to 07 AUG 2025