

TACAN Z RWY 14L

TACAN PAM Chan <b>64</b>	APCH CRS <b>130°</b>	Rwy Idg <b>10,008</b> TDZE <b>14</b> Arpt Elev <b>17</b>
-----------------------------	-------------------------	--

[USAF]

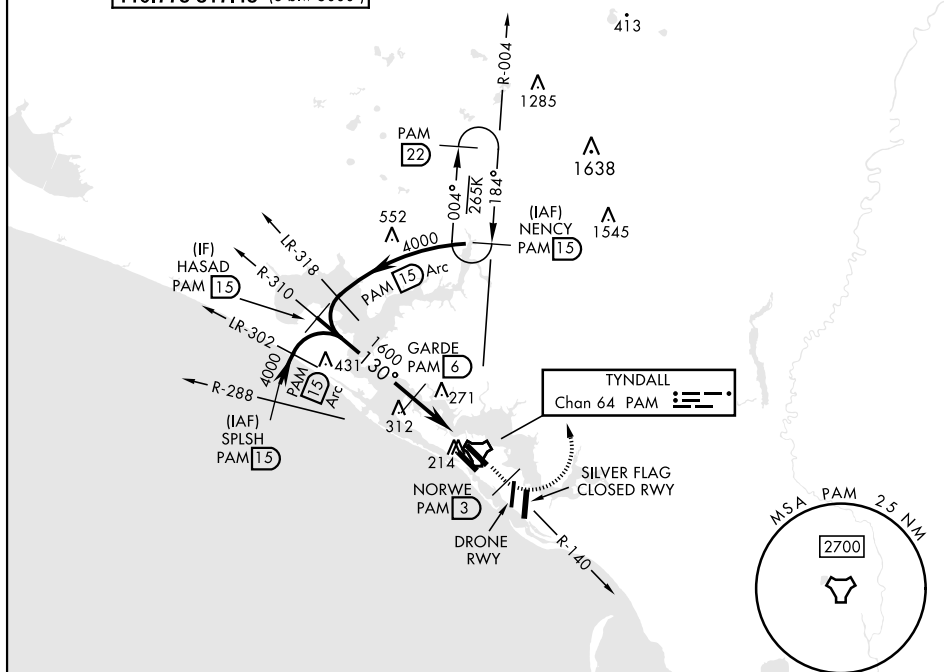
TYNDALL AFB (KPAM)

**T** \* When ALS inop, increase CAT AB RVR to 55 and vis to 1 mile, CAT CDE vis to 1 3/8 miles.

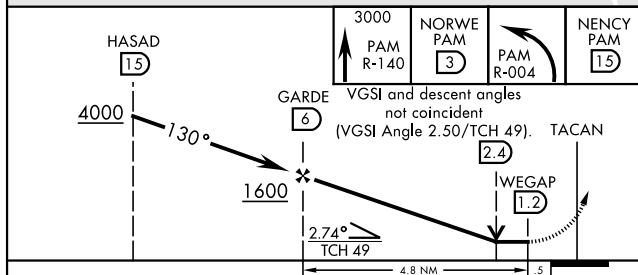
ALSF-1


**MISSED APPROACH:** Track outbound PAM TACAN R-140 to 3 DME (NORWE), then turn left to join PAM R-004 to 15 DME (NENCY) and hold. Maintain 3000.

ATIS ★	125.2	392.1	APP CON (N abv 5000')	TOWER ★		GND CON		CLNC DEL		ASR/PAR
254.4	120.825	379.3	(N blw 5000')	133.95	263.15	121.9	259.3	118.05	348.7	
	124.15	338.35	(S abv 5000')							
	119.775	317.45	(S blw 5000')							



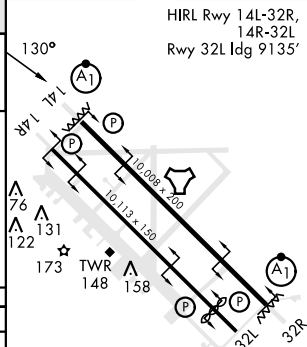
EMERG SAFE ALT 100 NM 3300



CATEGORY	A	B	C	D	E
S-14L*	500/24 486 (500-½)		500/50 486		(500-1)
 CIRCLING	540-1 523 (600-1)		540-1½ 523 (600-1½)	580-2 563 (600-2)	620-2½ 603 (700-2½)

ELEV 17		TDZE 14
---------	--	---------

HIRL Rwy 14L-32R,  
14R-32L  
Rwy 32L Idg 9135'



Recommend Rwy  
14L-32R for apch  
end engagement of A-Gear.