

WAAS CH 71279 W32B	APCH CRS 319°	Rwy ldg TDZE Arpt Elev	9135 17
--------------------------	------------------	------------------------------	------------

- (USAF)

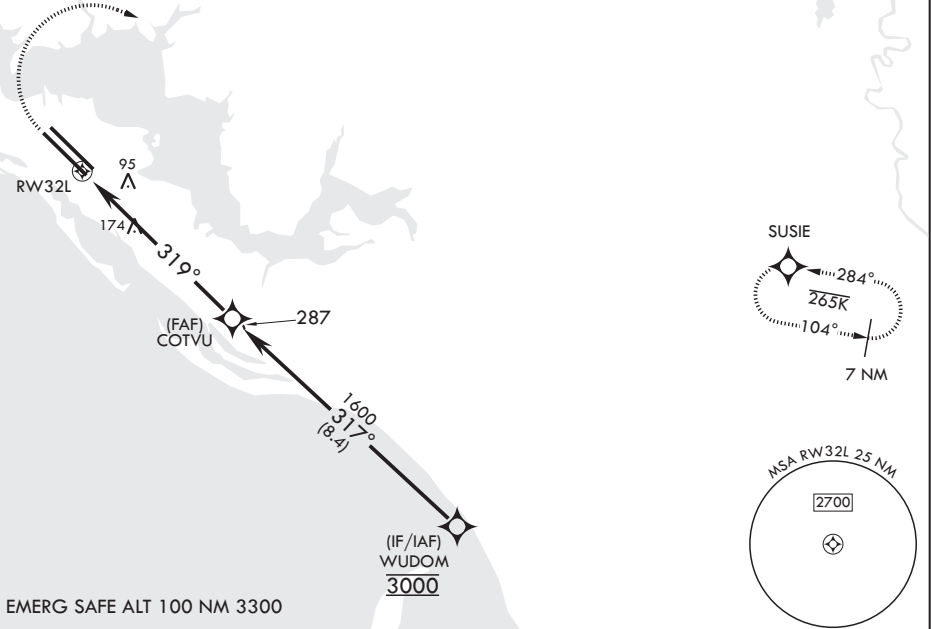
TYNDALL AFB (KPAM)

RNP APCH	MISSED APPROACH: Climb to 600 then climbing right turn to 3000 direct SUSIE and hold.
----------	---

ATIS★ 254.4	APP CON/DEP CON 119.775 317.45 BLW 5000' 124.15 338.35 ABV 5000'	TOWER★ 133.95 263.15	GND CON 121.9 259.3	CLNC DEL 118.05 348.7	ASR/PAR
----------------	--	-------------------------	------------------------	--------------------------	---------

For uncompensated Baro-VNAV systems, Procedure NA below 16°C (61°F) or above 54°C (130°F). Average Cold Temperature based on standard -30.00°C ISA deviation.

115



EMERG SAFE ALT 100 NM 3300

600	3000	SUSIE	VGSI and RNAV glidepath not coincident (VGSI angle 2.50/TCH 40).	WUDOM	ELEV 17	TDZE 17
↑	↗	⬠		3000		Rwy 32L ldg 9135'
				1600		
				317°		
				319°		
				1.6 NM to RW32L		
				5.8 NM		
				GP 2.50°		
				TCH 45		
CATEGORY	A	B	C	D	E	
LPV DA	217-3/4	200	(200-3/4)			
LNAV/VNAV DA	291-7/8 274 (300-7/8)	302-7/8 285 (300-7/8)	310-7/8 293 (300-7/8)	321-7/8 304 (400-7/8)		
LNAV MDA	480-1 463 (500-1)	480-1 463 (500-1)				
CIRCLING	540-1 523 (600-1)	540-1 523 (600-1)	580-2 563 (600-2)	620-2 603 (700-2 1/4)		