

PANAMA CITY, FLORIDA

RNAV (GPS) RWY 14L

WAAS CH 71271 W14A	APCH CRS 138°	Rwy ldg TDZE Arprt Elev	10,008 14 17
--------------------------	------------------	-------------------------------	--------------------

- (USAF)

TYNDALL AFB (KPAM)

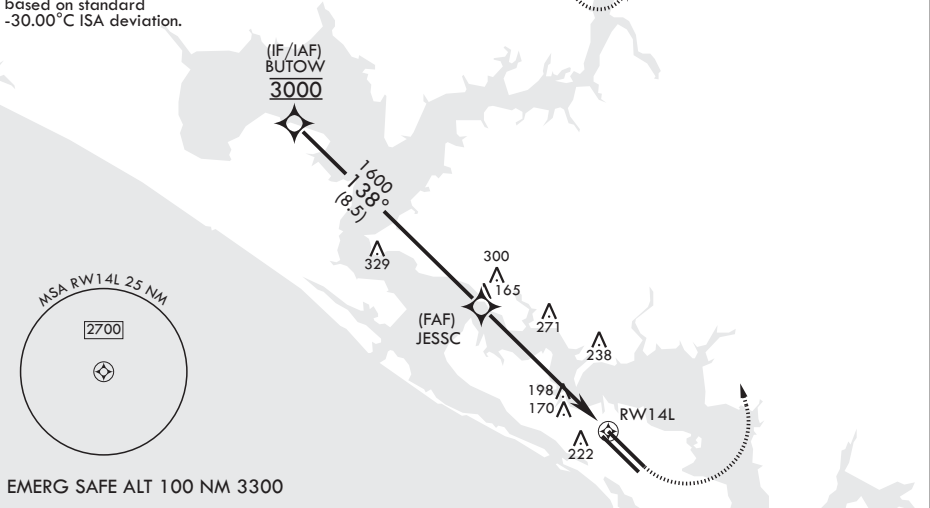
RNP APCH	ALSF-1	MISSED APPROACH: Climb to 600 then climbing left turn to 3000 direct NENCY and hold.
* When ALS inop increase RVR to 40, vis to 3/4 mile. ** When ALS inop increase RVR to 45, vis to 7/8 mile.		

ATIS★ 254.4	APP CON/DEP CON 119.775 317.45 BLW 5000' 124.15 338.35 ABV 5000'	TOWER★ 133.95 263.15	GND CON 121.9 259.3	CLNC DEL 118.05 348.7	ASR/PAR
----------------	--	-------------------------	------------------------	--------------------------	---------

*** When ALS inop increase CAT AB RVR to 55, vis to 1 mile; CAT CDE vis to 1 3/8 miles.

For uncompensated Baro-VNAV systems, Procedure NA below 15°C (59°F) or above 54°C (130°F).

Average Cold Temperature based on standard -30.00°C ISA deviation.



BUTOW		600	3000	NENCY	ELEV 17	TDZE 14
3000		Rwy 32L ldg 9135'				
GP 2.50° TCH 51		1.6 NM to RWY 14L				
JESSC		5.8 NM				
1600		RWY 14L				
138°		138°				
BCN 173		TWR 148				
10,008 x 200		10,113 x 150				
32L 32R		32L 32R				
CATEGORY		A	B	C	D	E
LPV DA*		214/24		200 (200-½)		
LNAV/VNAV DA**		276/24 262 (300-½)	287/24 273 (300-½)	295/24 281 (300-½)	306/24 292 (300-½)	
LNAV MDA***		500/24 486 (500-½)		500/50	486	(500-1)
CIRCLING		540-1 523 (600-1)		540-1½ 523 (600-½)	580-2 563 (600-2)	620-2¼ 603 (700-2¼)
HIRL all Rwys Recommend Rwy 14L-32R for apch end engagement of A-Gear.						

PANAMA CITY, FLORIDA

30°04'N - 85°34'W

TYNDALL AFB (KPAM)

Amdr 4 20MAY21

RNAV (GPS) RWY 14L

SE-3, 10 JUL 2025 to 07 AUG 2025

SE-3, 10 JUL 2025 to 07 AUG 2025