

PANAMA CITY, FLORIDA

ILS or LOC Z RWY 32R

LOC I-PAM <b><u>110.1</u></b>	APCH CRS <b>319°</b>	Rwy Idg <b>10,008</b> TDZE <b>14</b> Arpt Elev <b>17</b>
----------------------------------	-------------------------	--

[USAF]

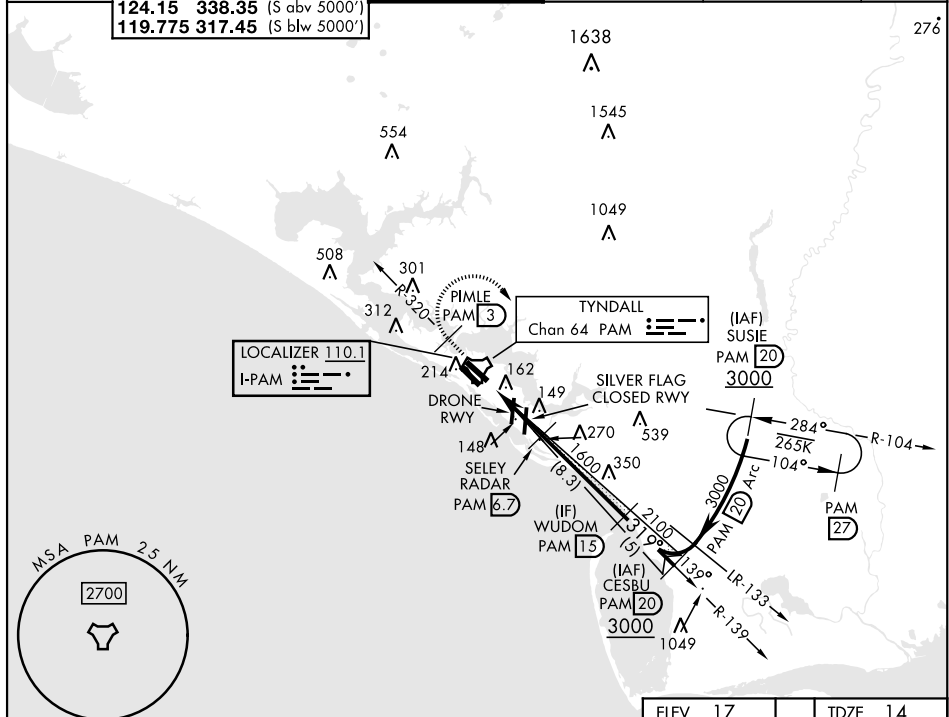
TYNDALL AFB (KPAM)

DME or RADAR required
-----------------------

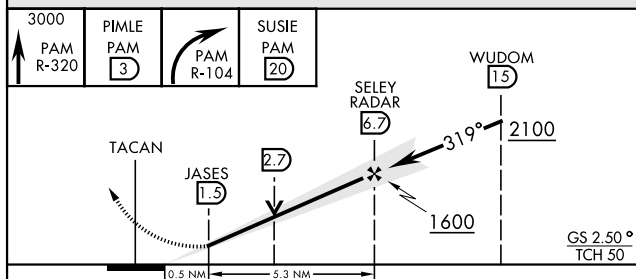
ALSF-1

**MISSED APPROACH:** Track outbound PAM R-320 to 3 DME (PIMLE), then turn right to join PAM R-104 to 20 DME (SUSIE) and hold. Maintain 3000.

ATIS ★	APP CON		TOWER ★		GND CON		CLNC DEL		ASR/PAR
254.4	125.2	392.1 (N abv 5000')	133.95	263.15	121.9	259.3	118.05	348.7	
	120.825	379.3 (N blw 5000')							
	124.15	338.35 (S abv 5000')							
	119.775	317.45 (S blw 5000')			142.8				276



EMERG SAFE ALT 100 NM 3300



CATEGORY	A	B	C	D	E
S-ILS 32R *	214/24		200	(200-½)	
S-LOC 32R **	540/24	526 (600-½)	540/55		526 (600-1)
<b>C</b> CIRCLING	540-1	523 (600-1)	540-1½ 523 (600-½)	580-2 563 (600-2)	620-2¼ 603 (700-2¼)

FAF to MAP 5.3 NM					
Knots	60	90	120	150	180
Min:Sec	5:18	3:32	2:39	2:07	1:46

PANAMA CITY, FLORIDA

30°04'N-85°34'W

TYNDALL AFB (KPAM)

Amdt 4 07OCT21

## ILS or LOC Z RWY 32R

SE-3, 10 JUL 2025 to 07 AUG 2025

SE-3, 10 JUL 2025 to 07 AUG 2025