

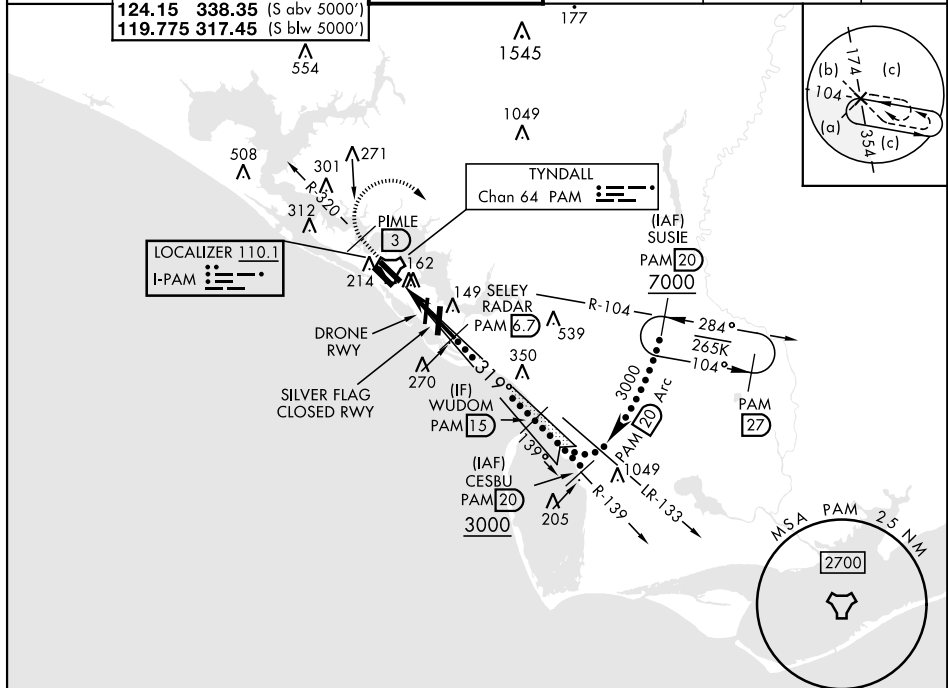
TYNDALL AFB (KPAM)

ALSF-1

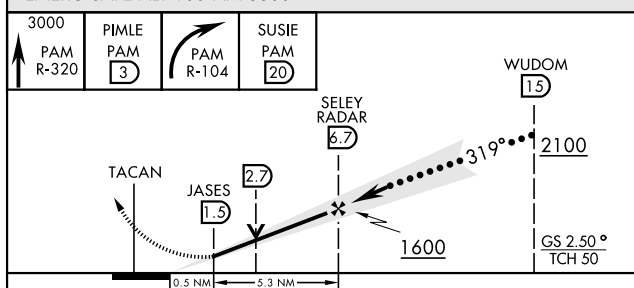


MISSED APPROACH: Track outbound PAM R-320 to 3 DME (PIMLE), then turn right to join PAM TACAN R-104 to 20 DME (SUSIE) and hold. Maintain 3000.

ATIS ★	125.2	APP CON 392.1 (N abv 5000')	TOWER ★	GND CON	CLNC DEL	ASR/PAR
254.4	120.825	379.3 (N b/w 5000')	133.95 263.15	121.9 259.3	118.05 348.7	



EMERG SAFE ALT 100 NM 3300



CATEGORY	C	D	E
S-ILS 32R *	214/24	200 (200-½)	
S-LOC 32R **	540/55	526 (600-1)	
C CIRCLING	540-1½ 523 (600-1½)	580-2 563 (600-2)	620-2¼ 603 (700-2¼)

The diagram shows Runway 32L and 32R. Runway 32L is 10,000 ft long and 100 ft wide. Runway 32R is 3,200 ft long and 100 ft wide. The diagram includes various navigational aids such as VASI, PAPI, and HIRL. The elevation is 17 feet and the TDZE is 14 feet. The HIRL is all runways. The runway is 32L Idg 9135'. The diagram also shows the FAF to MAP 5.2 NM and the recommended runway 14L-32R for approach and engagement of A-Gear.

FAF to MAP 5.2 NM					
Knots	120	140	160	180	200
Min:Sec	2:36	2:14	1:57	1:44	1:34

30°04'N-85°34'W

TYNDALL AFB (KPAM)

HI-ILS or LOC Y RWY 32R