

HI-ILS or LOC Y RWY 14L

[USAF]

TYNDALL AFB (KPAM)

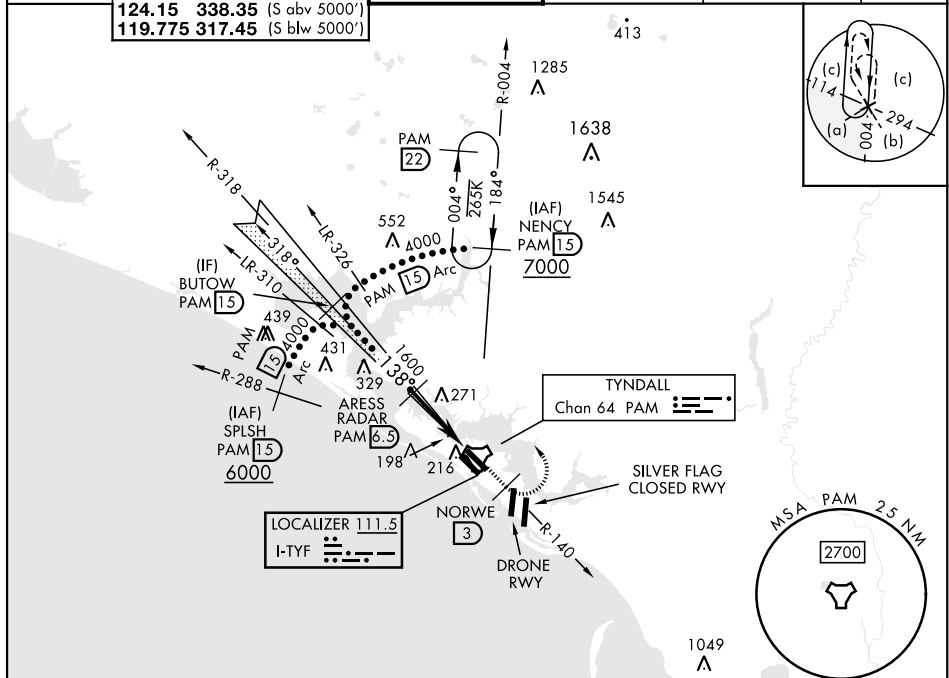
DME or RADAR required.

ALSF-1

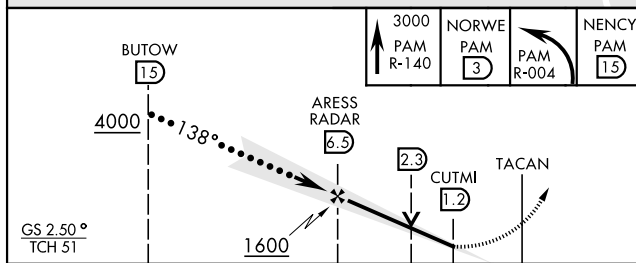
MISSED APPROACH: Track outbound PAM TACAN R-140 to 3 DME (NORWE), then turn left to join PAM R-004 to 15 DME (NENCY) and hold. Maintain 3000.

T * When ALS inop, increase RVR to 40, vis to $\frac{3}{4}$ mile.
 ** When ALS inop, increase vis to $1\frac{1}{8}$ miles.

ATIS ★	125.2	392.1	APP CON (N abv 5000')	TOWER ★	121.9	259.3	GND CON	118.05	348.7	CLNC DEL	ASR/PAR
254.4	120.825	379.3	(N blw 5000')	133.95	263.15						
	124.15	338.35	(S abv 5000')								
	119.775	317.45	(S blw 5000')								



EMERG SAFE ALT 100 NM 3300



CATEGORY	C	D	E
S-ILS 14L *	214/24	200	(200-½)
S-LOC 14L **	500/50	486	(500-1)
C CIRCLING	540-1½ 523 (600-1½)	580-2 563 (600-2)	620-2¼ 603 (700-2¼)

ELEV 17 **TDZE 14**

HIRL all Rwy's
Rwy 32L Idg 9135'

138°

141

148

A1

P

10,008' x 200'

10,113' x 150'

A76

A122

A131

173

TWR 148

A158

P

P

P

A1

32L

32R

Recommend Rwy
14L-32R for apch
end engagement of A-Gear.

FAF to MAP 5.3 NM					
Knots	120	140	160	180	200
Min:Sec	2:39	2:16	1:59	1:46	1:35

PANAMA CITY, FLORIDA

30°04'N-85°34'W

TYNDALL AFB (KPAM)

Amdt 4 20MAY21

HI-ILS or LOC Y RWY 14L