

WAAS CH 86520 W25A	APP CRS 254°	Rwy Idg TDZE Apt Elev	12002 2503 2543
--	------------------------	-----------------------------	--

RNAV (GPS) RWY 25

PALMDALE USAF PLANT 42 (PMD)

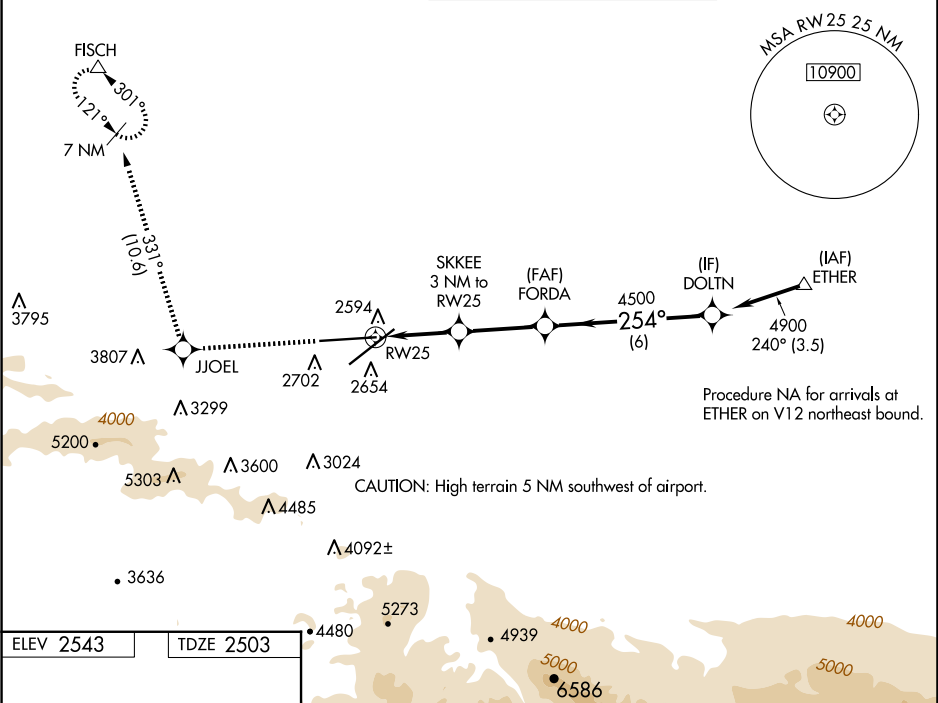
⚠

For uncompensated Baro-VNAV systems, LNAV/VNAV NA below -6°C (22°F) or above 50°C (123°F). Circling NA for Cats C and D south of Rwy 4 and 25. DME/DME RNP-0.3 NA.

MISSED APPROACH:

Climb 6700 direct JJOEL and on track 331° direct FISCH and hold, continue climb-in-hold to 6700.

ATIS 118.275	JOSHUA APP CON 124.55 363.0	PALMDALE TOWER ★ 123.7 (CTAF) 0 317.6	GND CON 121.9 317.6
------------------------	---------------------------------------	---	-------------------------------



ELEV 2543

TDZE 2503

REIL Rwy 4, 7, 22 and 25

HIRL Rwy 4-22 and 7-25

ASSAULT STRIP 6000 X 75

TWR

12002 X 200

12001 X 160

0.5% DOWN

0.72%

0.3% UP

254°

2640

6700	JJOEL	tr 331°	FISCH	VGSI and RNAV glidepath not coincident (VGSI Angle 3.00/TCH 76).
*LNAV only.				
RWY 25				
*1 NM to RWY 25				
3500*				
1 NM 2 NM 3.1 NM 6 NM				
CATEGORY	A	B	C	D
LPV DA	2703-3/4 200 (200-3/4)			
LNAV/VNAV DA	2806-1 303 (300-1)			
LNAV MDA	2880-1 377 (400-1)			
CIRCLING	3020-1 477 (500-1)	3060-1 517 (600-1)	3140-1 597 (600-1 1/2)	3740-3 1197 (1200-3)