

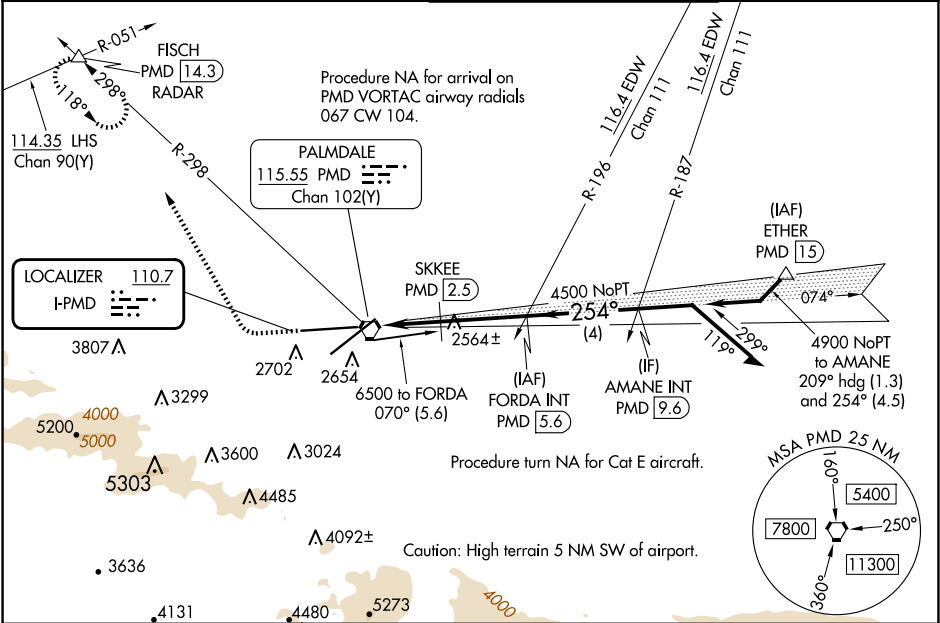
LOC I-PMD 110.7	APP CRS 254°	Rwy Ldg TDZE Apt Elev 12002 2503 2543
---------------------------	------------------------	---

ILS Z or LOC Z RWY 25
PALMDALE USAF PLANT 42 (PMD)

⚠ Circling NA for Cats C, D, and E south of Rwy 4 and 25.
⚠ DME from PMD VORTAC. Simultaneous reception of I-PMD and PMD DME required.

MISSED APPROACH: Climb to 3000 then climbing right turn to 6700 on heading 318° and on PMD VORTAC R-298 to FISCH INT/PMD 14.3 DME/RADAR and hold, continue climb-in-hold to 6700.

ATIS 118.275	JOSHUA APP CON 124.55 363.0	PALMDALE TOWER ★ 123.7 (CTAF) 0 317.6	GND CON 121.9 317.6
------------------------	---------------------------------------	---	-------------------------------



ELEV 2543	TDZE 2503	3000	6700	PMD R-298	FISCH	FORDA INT PMD 5.6	AMANE INT PMD 9.6	5000	Remain within 10 NM
VGSI and ILS glidepath not coincident (VGSI Angle 3.00/TCH 76).									
CATEGORY									
S-ILS 25									
S-LOC 25									
CIRCLING									
SKKEE FIX MINIMUMS (DME REQUIRED)									
S-LOC 25									
CIRCLING									

SW-3, 10 JUL 2025 to 07 AUG 2025

SW-3, 10 JUL 2025 to 07 AUG 2025