

PALMDALE, CALIFORNIA

HI-TACAN RWY 25

TACAN PMD Chan <b>102 (Y)</b>	APCH CRS <b>265°</b>	Rwy Idg <b>12,002</b> TDZE <b>2503</b> Arprt Elev <b>2543</b>
----------------------------------	-------------------------	---

AL-310 [USAF]

PALMDALE USAF PLANT 42 (KPMD)

\* Circling NA S of Rwy 4 and 25.

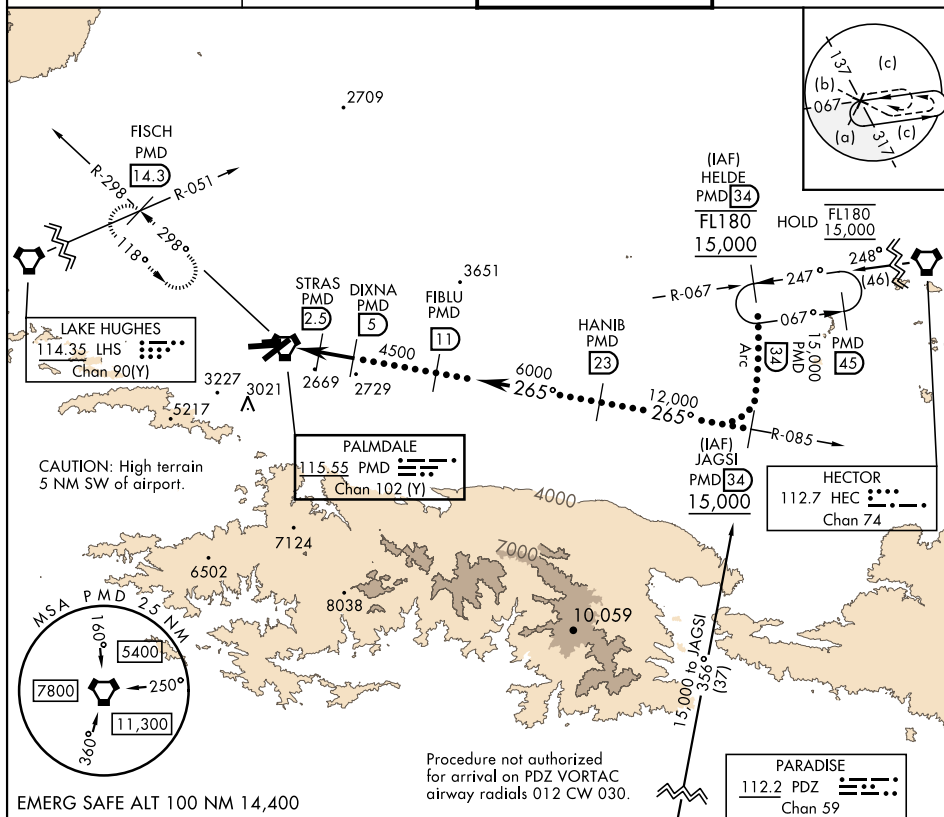
**MISSED APPROACH:** Climb to 3000 then climbing right turn to 6700 on heading 318° on PMD VORTAC R-298 to FISCH INT/PMD 14.3 DME/RADAR and hold, continue climb-in-hold to 6700.

ATIS  
118.275

JOSHUA APP CON  
124.55 363.0

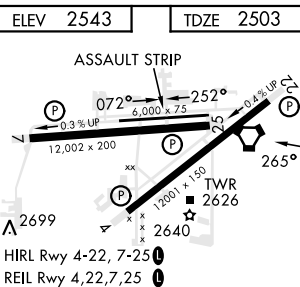
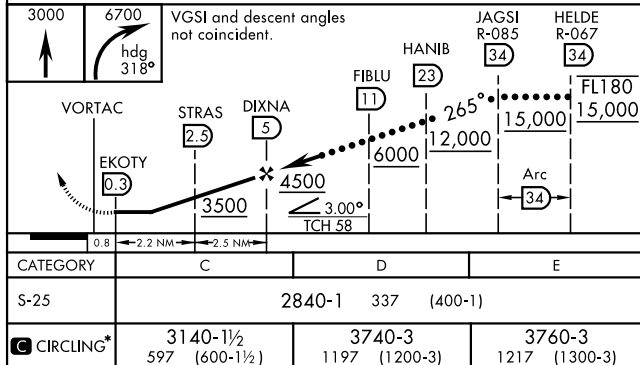
TOWER ★  
123.7 (CTAF) **L** 317.6

GND CON  
121.9 317.6



Procedure not authorized  
for arrival on PDZ VORTAC  
airway radials 012 CW 030

EMERG SAFE ALT 100 NM 14,400



PALMDALE, CALIFORNIA

34°38'N-118°05'W

PALMDALE USAF PLANT 42 (KPMD)

Amdt 3 15JUN23

## HI-TACAN RWY 25

SW-3, 10 JUL 2025 to 07 AUG 2025

SW-3. 10 JUL 2025 to 07 AUG 2025