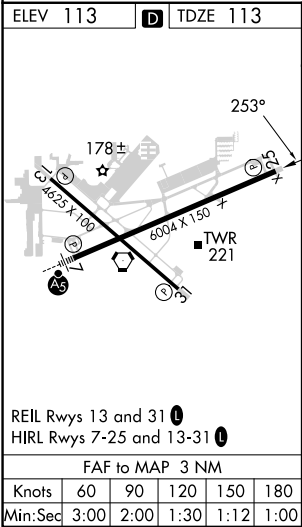
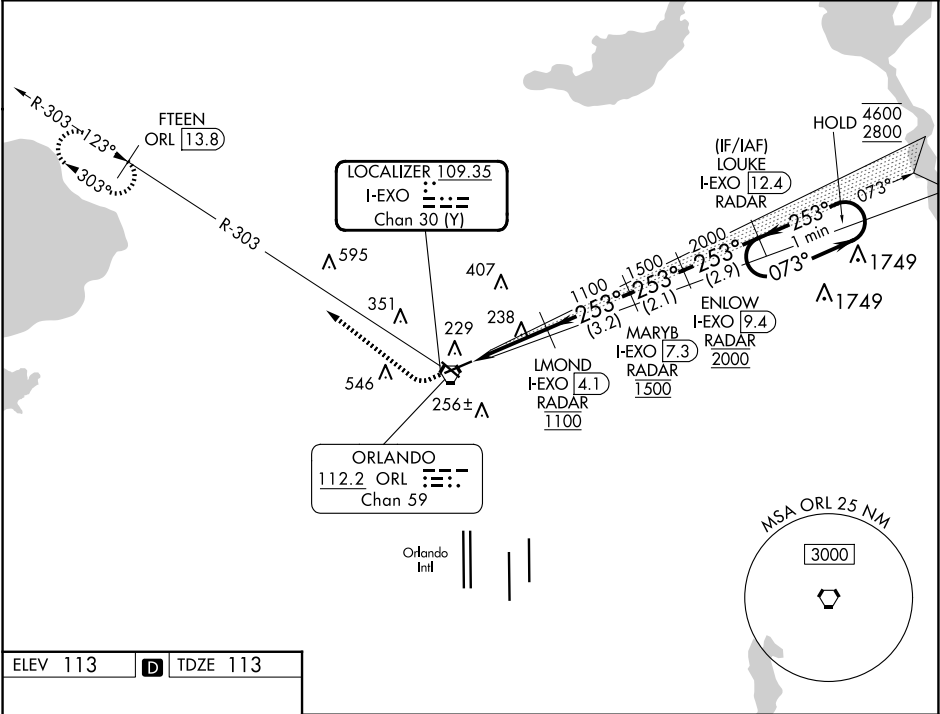


LOC/DME I-EXO 109.35 Chan 30(Y)	APP CRS 253°	Rwy Idg 6004 TDZE 113 Apt Elev 113
---	------------------------	---

ILS or LOC RWY 25

EXEC (ORL)

DME or RADAR required.				MISSED APPROACH: Climb to 600 then climbing right turn to 1700 on heading 315° and on ORL VORTAC R-303 to FTEEN/ORL 13.8 DME and hold.		
⚠ Circling Rwy 31 NA at night. In minimum visibility conditions, bright lights on highway ½ mile south of airport may be mistaken for runway lights.						
ATIS 127.25	ORLANDO APP CON 124.8 351.9	EXECUTIVE TOWER ★ 118.7 (CTAF) 0 239.0	GND CON 121.4 239.0	CLNC DEL 128.45	CLNC DEL 125.225 (when twr closed)	UNICOM 122.95



ELEV 113 TDZE 113		One Minute Holding Pattern			
600 1700 ORL R-303 FTEEN ORL 13.8		LOUKE I-EXO 12.4 RADAR			
253°		ENLOW I-EXO 9.4 RADAR			
1100 1500 2000 253° 073° 4600 2800		MARYB I-EXO 7.3 RADAR			
1.1 NM 1.9 NM 3.2 NM 2.1 2.9 NM		LMOND I-EXO 4.1 RADAR			
CATEGORY		GS 3.00° TCH 46			
S-ILS 25		313-¾ 200 (200-¾)			
S-LOC 25		500-1 387 (400-1) 500-1½ 387 (400-1½)			
Knots 60 90 120 150 180		CIRCLING			
Min:Sec 3:00 2:00 1:30 1:12 1:00		580-1 467 (500-1) 680-1 567 (600-1) 860-2¼ 747 (800-2¼) 860-2½ 747 (800-2½)			