

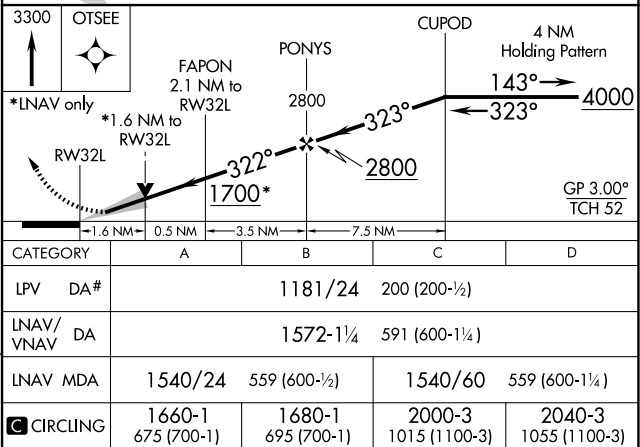
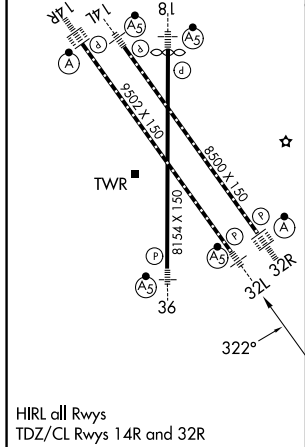
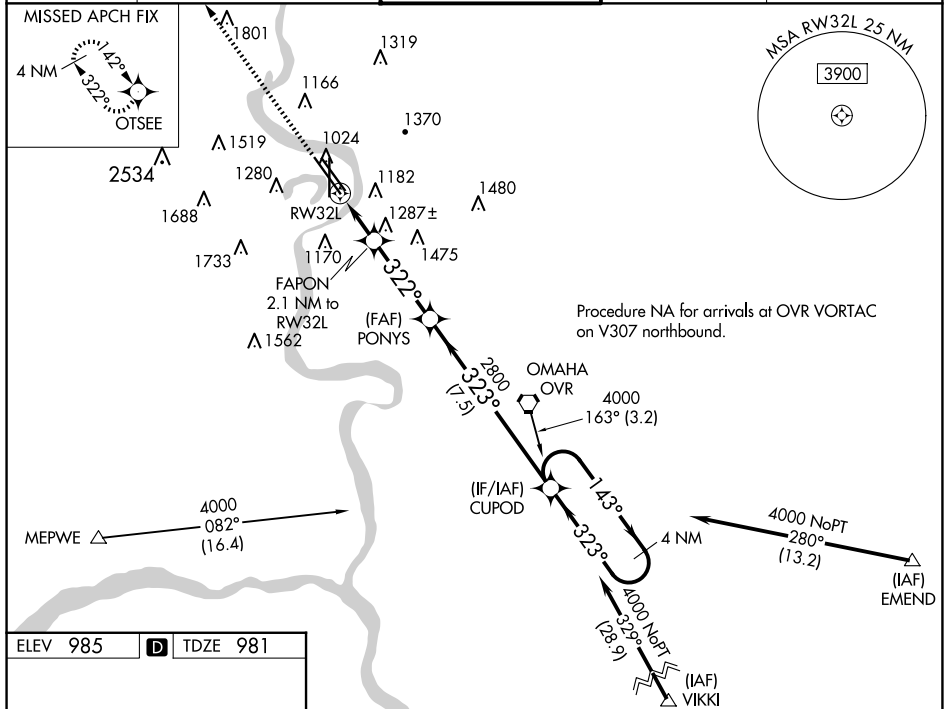


25163

WAAS CH 60917 W32A	APP CRS 322°	Rwy Ldg 9502 TDZE 981 Apt Elev 985
--	------------------------	---

RNAV (GPS) Y RWY 32L
EPPLEY AIRFIELD (OMA)

RNP APCH.  For uncompensated Baro-VNAV systems, LNAV/VNAV NA below -1°C (+2°F) or above 54°C (130°F). # RVR 1800 authorized with use of FD or AP or HUD to DA.		MALSR 	MISSED APPROACH: Climb to 3300 direct OTSEE and hold, continue climb-in-hold to 3300.	
D-ATIS 120.4	OMAHA APP CON 135.875 354.05	OMAHA TOWER 132.1 256.9	GND CON 121.9	CLNC DEL 119.9



OMAHA, NEBRASKA
Amdt 2 24MAY18

41°18'N-95°54'W

EPPLEY AIRFIELD (OMA)

RNAV (GPS) Y RWY 32L

NC-2, 10 JUL 2025 to 07 AUG 2025