

APP CRS
322°

Rwy Ldg
TDZE
981

Apt Elev
985

RNAV (RNP) Z RWY 32L

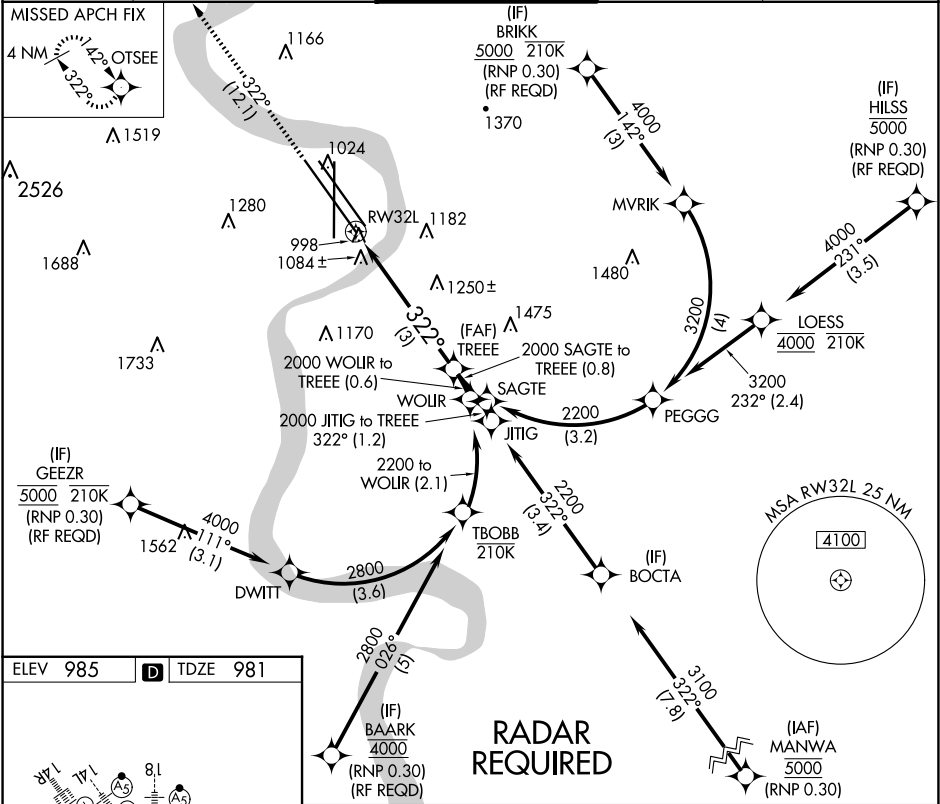
EPPLEY AIRFIELD (OMA)

⚠ For uncompensated Baro-VNAV systems, procedure NA below -19°C (-2°F) or above 54°C (130°F). When VGSI inop, procedure NA at night.
For inoperative ALS, increase RNP 0.15 all Cat's visibility to 1¼ SM and RNP 0.30 all Cat's visibility to 2¼ SM. GPS required.

MALSR

MISSED APPROACH:
Climb to 3300 on track 322° to OTSEE and hold.

D-ATIS 120.4	OMAHA APP CON 135.875 354.05	OMAHA TOWER 132.1 256.9	GND CON 121.9	CLNC DEL 119.9
------------------------	--	-----------------------------------	-------------------------	--------------------------



ELEV 985

D

TDZE 981

3300

OTSEE

tr 322°

VGSI and RNAV glidepath not coincident
(VGSI Angle 3.00/TCH 51).

TREE 2000

2000

GP 3.00°
TCH 57

See planview for multiple IF locations.

3 NM

CATEGORY	A	B	C	D
RNP 0.15 DA		1359/50	378 (400-1)	
RNP 0.30 DA		1624-1¾	643 (700-1¾)	

AUTHORIZATION REQUIRED

OMAHA, NEBRASKA

Orig-B 24MAY18