

APP CRS	Rwy Ldg	8013
178°	TDZE	982
	Apt Elev	985

RNAV (RNP) Z RWY 18
EPPLEY AIRFIELD (OMA)

T For uncompensated Baro-VNAV systems, procedure NA below -17°C (2°F) or above 54°C (130°F). For inoperative ALS, increase RNP 0.15 all Cats visibility to 1½ and RNP 0.30 all Cats visibility to 2. GPS required.



MISSED APPROACH: Climb to 3000 on track 178° to CIVV and hold.

D-ATIS
120.4

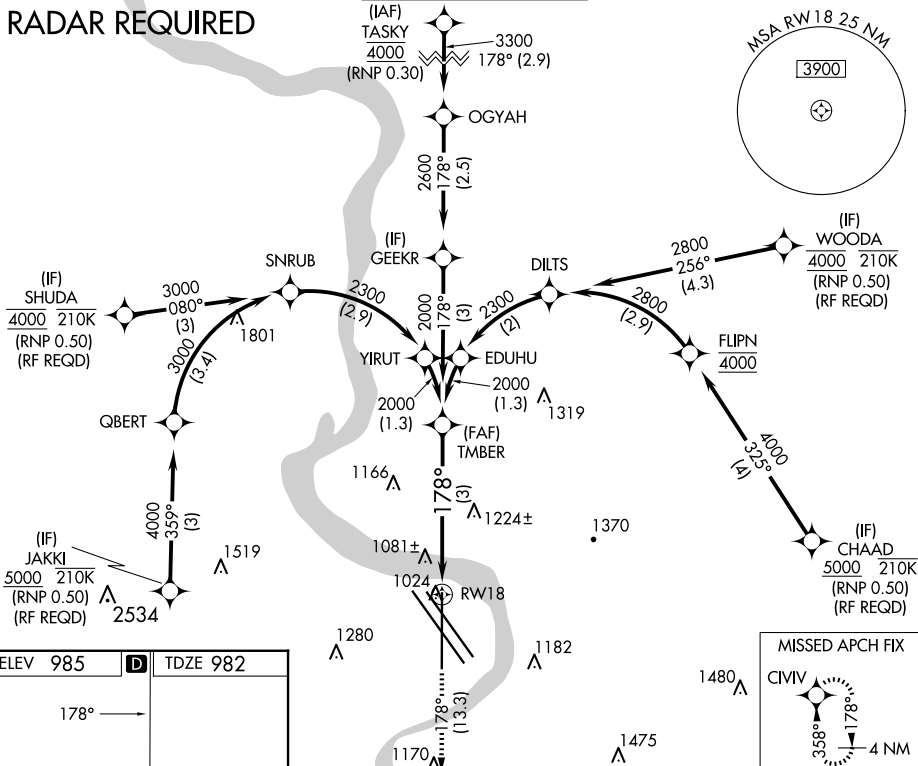
OMAHA APP CON
135.875 354.05

OMAHA TOWER
132.1 256.9


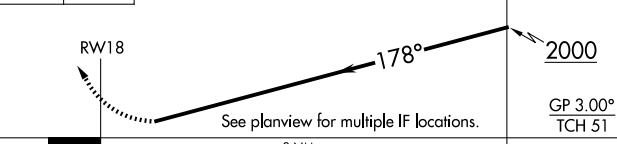
GND CON
121.9

CLNC DEL
119.9

RADAR REQUIRED



ELEV 985	D	TDZE 982
----------	----------	----------

3000 ↑ tr 178°	CIVV 				
CATEGORY	A	B	C	D	
RNP 0.15 DA	1341/40 359 (400-¾)				
RNP 0.30 DA	1576-1⅝ 594 (600-1⅝)				

AUTHORIZATION REQUIRED